



THE

CAPE FEAR  
2021 Premium Book

FAIR

& EXPO

OCT 29 - NOV 7

*Featuring .....*



*Powers Great  
American Midway*

TICKET to FUN!

ANIMALS

RIDES

SHOWS

GAMES

WWW.CAPEFEARFAIR.COM

## Cape Fear Fair & Expo Agricultural Exhibits

This year the Cape Fear Fair & Expo (October 29-November 7) will feature educational as well as individual exhibits inside the Agricultural Exhibit Tent. The educational booths can be reserved by any formally organized non-profit club or group who wants to prepare an exhibit for the fair. Individual exhibits are open to the residents of New Hanover, Pender and Brunswick counties. Items that can be entered include: field crops, horticultural crops, culinary, clothing, needlework, arts and crafts, youth and vocational entries. All items must be made during the current year and taken to the fair grounds according to the following schedule:

### Schedule of Entries: *Agricultural Tent*

Sunday, October 24; Noon-6 pm

Monday, October 25; 6-9 pm

Tuesday, October 26; 6-9 pm

### Special Entries Schedule

#### *Baked Goods Entries\**

Saturday, October 30; 9-11 am

#### *Cut Flowers Entries\**

Saturday, October 30; 9-11 am

\*These entries will be accepted in a designated place at the front entrance to the Fair.

Each exhibitor is responsible for picking up their entries on Monday, November 8 from 10:00 am to 3:00 pm. All entries not picked up by 3:00 pm will become property of the CFF&E. No exceptions. For booth reservations or premium listings call the Cape Fear Fair & Expo at 313-1234 - [www.capefearfair.com](http://www.capefearfair.com)

## Rules and Regulations

1. The Fair Management reserves the right to rule on all matters not covered in these regulations.
2. Entries in this fair are open to residents of New Hanover, Pender and Brunswick counties, in either open competition, adult competition or student competition.
3. Each exhibitor is responsible for proper delivery and registering of exhibits.
4. Booth exhibitors are responsible for proper delivery and placing of exhibits on Monday thru Wednesday October 25-27 from noon until 9 pm.
5. Exhibits not correctly entered will be disqualified for prizes.
6. **The decision of the judges will be final in all matters concerning the order of placing exhibits for prizes.**
7. **The management will provide what it considers reasonable precautions, but will not be responsible for the welfare of any exhibit entered in the fair.**
8. **Exhibits and entries not removed by 3:00 pm on Monday, November 8 will be disposed of by the fair management in the manner that seems most convenient to them.** Exhibits must be picked up from 10:00 am until 3:00 pm on Monday, Nov. 8. Prizes will be distributed when exhibits are picked up. No charges for transportation to or from the fair will be paid by the management.
9. No article will be entitled to space until proper entry has been made and it is prepared for entry as listed in the specific Divisions in this book.
10. The management reserves the right to reject any entry if all available space for that class of exhibit has been exhausted.
11. Rules listed with each department will take precedence over general rules. One person can enter two like products in the same category.
- 12.

## Judges and Judging of Exhibits

The management will select judges for each class whom they consider capable and fair. The written report must be made by the judges of each class before winners are announced. No rules for judges will be issued to the judges by the fair management. In the event the judge decides a winning exhibit is not worthy of a first prize, it will be given the prize designated by the judge.

### DEPARTMENT INDEX

#### *Division I. Agriculture*

- A. Field Crops
- B. Vegetables
- C. Fruits and Nuts
- D. Foliage & Flowering Plants

#### *Division II. Home Economics*

- E. Culinary
- F. Clothing
- G. Needlework
- H. Arts and Crafts
- I. Paintings
- J. Photography

#### *Division III. Entomology*

- A. Extracted Honey
- B. Products
- C. Plants

#### *Division IV. Educational Booths*

#### *Division V. Program Features & Special Events*

#### *Division VI. Livestock*

- A. Beef cattle
- B. Dairy cattle
- C. Swine
- D. Horses
- E. Fowl
- F. Sheep
- G. Rabbits
- H. Goats



## DIVISION I AGRICULTURE

There may be no more than two entries by the same person in the same Division/Category. Youth entries will be accepted in all categories and need to be marked "Y" for the category entered. Ex. A-1Y Barley

### Score Card

Condition.....	30 Points
Uniformity.....	25 Points
Color and Finish.....	15 Points
Size.....	15 Points
Trueness to Variety Form.....	15 Points
Total.....	100 Points

### Department A Field Crops

	1st	2nd	3rd					
A-1 Barley, on quart, any variety	\$5	\$3	\$2	B-33 Okra, Green - Plate of 10 Pods	\$5	\$3	\$2	
A-2 Cotton	\$5	\$3	\$2	B-34 Okra, Red or Purple, Plate of 10 pods	\$5	\$3	\$2	
A-3 Field Corn best 5 ears any variety	\$5	\$3	\$2	B-35 Onion, Red/Purple, Plate of 10 pods	\$5	\$3	\$2	
A-4 Oats, one quart, any variety	\$5	\$3	\$2	B-36 Onion, Yellow, Plate of 3	\$5	\$3	\$2	
A-5 Pasture & Forage (1 bale)	\$8	\$4	\$2	B-37 Onion, White, Plate of 3	\$5	\$3	\$2	
A-6 Rye, one quart, any variety	\$5	\$3	\$2	B-38 Pea, Green Field, Plate of 10 pods	\$5	\$3	\$2	
A-7 Soybeans, one quart, any variety	\$5	\$3	\$2	B-39 Pea, Dried Field, Plate of 10 pods	\$5	\$3	\$2	
A-8 Sugar Cane, cut into 18 inch pieces (3)	\$5	\$3	\$2	B-40 Pea, Sugar Snaps, Plate of 10 pods	\$5	\$3	\$2	
A-9 Sunflower - best head	\$8	\$4	\$2	B-41 Pepper, Bll Green, Plate of 5	\$5	\$3	\$2	
A-10 Sunflower - largest face	\$8	\$4	\$2	B-42 Pepper, Bell Red, Plate of 5	\$5	\$3	\$2	
A-11 Tobacco, best in leaf (1 lb)	\$8	\$4	\$2	B-43 Pepper, Hot Green, Plate of 5	\$5	\$3	\$2	
A-12 Wheat, one quart, any variety	\$8	\$4	\$2	B-44 Pepper, Hot Red, Plate of 5	\$5	\$3	\$2	
A-13 Any other	\$5	\$3	\$2	B-45 Pepper, Banana, Plate of 5	\$5	\$3	\$2	
				B-46 Pepper, Habanero, Plate of 5	\$5	\$3	\$2	
				B-47 Pepper, Jalapeno, Plate of 5	\$5	\$3	\$2	

### Department B Vegetables

	1st	2nd	3rd					
B-1 Artichoke	\$5	\$3	\$2	B-48 Pepper, Micro, Plate of 5	\$5	\$3	\$2	
B-2 Beans, Lima dried - Plate of 20 pods	\$5	\$3	\$2	B-49 Pepper, Serrano, Plate of 5	\$5	\$3	\$2	
B-3 Beans, Lima, Green - Plate of 20 pods	\$5	\$3	\$2	B-50 Pepper, Any Other, Plate of 5	\$5	\$3	\$2	
B-4 Beans, Green String - Plate of 12 pods	\$5	\$3	\$2	B-51 Pepper, Most Unusual Shape	\$5	\$3	\$2	
B-5 Brussel Sprouts - Plate of 12 pods	\$5	\$3	\$2	B-52 Potato, Irish, Red, Plate of 5	\$5	\$3	\$2	
B-6 Cabbage, Best Head - Plate of 1	\$5	\$3	\$2	B-53 Potato, Irish, White, Plate of 5	\$5	\$3	\$2	
B-7 Cabbage, Largest Head - Plate of 1	\$5	\$3	\$2	B-54 Potato, Irish, Yellow, Plate of 5	\$5	\$3	\$2	
B-8 Cantaloupe (Muskmelon) - Plate of 1	\$5	\$3	\$2	B-55 Potato, Sweet Largest	\$5	\$3	\$2	
B-9 Carrots - Bunch of 5 on a plate	\$5	\$3	\$2	B-56 Potato, Sweet, Red/Orange Plate of 3	\$5	\$3	\$2	
B-10 Collard, Best - Plate of 3 leaves	\$5	\$3	\$2	B-57 Potato, Sweet, White Plate of 3	\$5	\$3	\$2	
B-11 Collard, largest Leaf - Plate of 1 leaf	\$5	\$3	\$2	B-58 Potato, Sweet Any Variety, Plate of 3	\$5	\$3	\$2	
B-12 Collard, Best Potted Plant	\$5	\$3	\$2	B-59 Potato, Sweet, Most Unusual Shape	\$5	\$3	\$2	
B-13 Corn, Sweet White - Plate of 3 ears	\$5	\$3	\$2	B-60 Pumpkin, Best	\$5	\$3	\$2	
B-14 Corn, Sweet Yellow - Plate of 3 ears	\$5	\$3	\$2	B-61 Pumpkin, Largest	\$5	\$3	\$2	
B-15 Corn, Indian - Plate of 3 ears	\$5	\$3	\$2	B-62 Pumpkin, Most Unusual Shape	\$5	\$3	\$2	
B-16 Corn, Indian Miniature - Plate of 3 ears	\$5	\$3	\$2	B-63 Pumpkin, Best Decorated	\$5	\$3	\$2	
B-17 Cucumber, Pickling - Plate of 5	\$5	\$3	\$2	B-64 Pumpkin, Best Carved	\$5	\$3	\$2	
B-18 Eggplant, Purple - Plate of 3	\$5	\$3	\$2	B-65 Pumpkin, Best Miniature, Plate of 3	\$5	\$3	\$2	
B-19 Eggplant, White - Plate of 3	\$5	\$3	\$2	B-66 Radish, Red, Plate of 5	\$5	\$3	\$2	
B-20 Eggplant, Oriental - Plate of 3	\$5	\$3	\$2	B-67 Radish, White, Plate of 5	\$5	\$3	\$2	
B-21 Eggplant, Any Other - Plate of 3	\$5	\$3	\$2	B-68 Radish, Daikon, Plate of 3	\$5	\$3	\$2	
B-22 Garlic, Potted Plant	\$5	\$3	\$2	B-69 Scallion, Bunch	\$5	\$3	\$2	
B-23 Garlic, Bottom (clove) Plate of 3	\$5	\$3	\$2	B-70 Squash, Acorn, Plate of 3	\$5	\$3	\$2	
B-24 Herb, Potted Plant	\$5	\$3	\$2	B-71 Squash, Butternut, Plate of 2	\$5	\$3	\$2	
B-25 Herb, Dried in a Jar	\$5	\$3	\$2	B-72 Squash, Cushaw, Plate of 1	\$5	\$3	\$2	
B-26 Herb, Dried Bunch	\$5	\$3	\$2	B-73 Squash, Spaghetti, Plate of 1	\$5	\$3	\$2	
B-27 Kale, Potted Plant	\$5	\$3	\$2	B-74 Squash, Summer Yellow, Plate of 3	\$5	\$3	\$2	
B-28 Kale, Best Plate of 3 leaves	\$5	\$3	\$2	B-75 Squash, Turban, Plate of 1	\$5	\$3	\$2	
B-29 Kohlrabi, Plate of 3 leaves	\$5	\$3	\$2	B-76 Squash, Zucchini, Plate of 3	\$5	\$3	\$2	
B-30 Mustard, Potted Green Plant	\$5	\$3	\$2	B-77 Squash, Any Other Gourd/Squash	\$5	\$3	\$2	
B-31 Mustard, Potted Red Plant	\$5	\$3	\$2	B-78 Swiss Chard, Potted Plant	\$5	\$3	\$2	
B-32 Mustard, Plate of 5 leaves	\$5	\$3	\$2	B-79 Swiss Chard, Plate of 3	\$5	\$3	\$2	
				B-80 Tomato, Heirloom Type, Plate of 3	\$5	\$3	\$2	
				B-81 Tomato, Cherry Type, Plate of 3	\$5	\$3	\$2	

B-82	Tomato, Green Slicing, Plate of 3	\$5	\$3	\$2	C-20	Pears, Largest	\$5	\$3	\$2
B-83	Tomato, Red Slicing, Plate of 3	\$5	\$3	\$2	C-21	Persimmon, American, Plate of 6	\$5	\$3	\$2
B-84	Tomato, Any Other Type, Plate of 3	\$5	\$3	\$2	C-22	Persimmon, Oriental Type, Plate of 3	\$5	\$3	\$2
B-85	Tomato, Most Unusual Shape	\$5	\$3	\$2	C-23	Pineapple, Potted Plant	\$5	\$3	\$2
B-86	Turnip Greens, Plate of Leaf Tops	\$5	\$3	\$2	C-24	Pomegranate, Plate of 3	\$5	\$3	\$2
B-87	Turnip Roots, Purple, Plate of 3	\$5	\$3	\$2	C-25	Pomegranate, Largest	\$5	\$3	\$2
B-88	Watermelon, Best	\$5	\$3	\$2	C-26	Most Unusual Fruit Types (not already listed)	\$5	\$3	\$2
B-89	Watermelon, Largest	\$5	\$3	\$2	C-27	Most Unusual Fruit Shape/Color	\$5	\$3	\$2
B-90	Watermelon, Minature/Refrigerator Type	\$5	\$3	\$2	C-28	Chestnuts, pint basket or disposable bowl	\$5	\$3	\$2
B-91	Any Other Melon Types (Crenshaw, Honeydew, Sprite)	\$5	\$3	\$2	C-29	Hickory Nuts, pint basket or disposable bowl	\$5	\$3	\$2
B-92	Best Decorative Container Arrangement (mixed salad greens)	\$5	\$3	\$2	C-30	Peanuts, pint basket or disposable bowl	\$5	\$3	\$2
B-93	Best Decorative Basket Arrangement of Peppers	\$5	\$3	\$2	C-31	Pecans, pint basket or disposable bowl	\$5	\$3	\$2
B-94	Best Decorated Art Arrangement of micro/small peppers	\$5	\$3	\$2	C-32	Walnuts, Black, pint basket or disposable bowl	\$5	\$3	\$2
B-95	Best Decorated Vegetable Art (any veg, painted, carved, decorated)	\$5	\$3	\$2	C-33	Most Unusual Tree Nut, pint basket or disposable bowl	\$5	\$3	\$2

### ***Edible Garden Center***

This exhibit is designed to promote the production of a wide variety of vegetables that can be grown in family gardens to to create an attractive display of vegetables grown as an arrangement.

- 1 All vegetables exhibited must be grown by an exhibitor. Any evidence of vegetables shown other than those grown by exhibitor will disqualify display.
- 2 A minimum of 3 different vegetables is required for entering display. At least 6 vegetables must be exhibited.
- 3 Different varieties of a single vegetable may be shown but will not count toward the minimum requirement of 3 different vegetables.
- 4 Quality as well as number of vegetables will be considered in selecting winning display.
- 5 All vegetables must be exhibited in a basket or floral arrangement container.
- 6 Other non vegetable plant materials may be used as fillers for the overall design.
- 7 No artificial produce allowed entry will be disqualified.

B-96	Edible Garden Centerpiece	\$16	\$12	\$8
------	---------------------------	------	------	-----

### ***Department C Fruits and Nuts***

		1st	2nd	3rd
C-1	Apple, Heirloom Type, Plate of 3	\$5	\$3	\$2
C-2	Apple, Green, Plate of 3	\$5	\$3	\$2
C-3	Apple, Golden, Plate of 3	\$5	\$3	\$2
C-4	Apple, Red, Plate of 3	\$5	\$3	\$2
C-5	Apple, Any Other Type, Plate of 3	\$5	\$3	\$2
C-6	Apple, Largest	\$5	\$3	\$2
C-7	Blackberries, pint basket	\$5	\$3	\$2
C-8	Blueberries, pint basket	\$5	\$3	\$2
C-9	Citrus, Grapefruit, Plate of 3	\$5	\$3	\$2
C-10	Citrus, Kumquat, Plate of 3	\$5	\$3	\$2
C-11	Citrus, Lemon, Plate of 3	\$5	\$3	\$2
C-12	Citrus, Lime, Plate of 3	\$5	\$3	\$2
C-13	Citrus, Orange, Plate of 3	\$5	\$3	\$2
C-14	Citrus, Largest	\$5	\$3	\$2
C-15	Citrus, Most Unusual, Plate of 3	\$5	\$3	\$2
C-16	Fig, Plate of 3	\$5	\$3	\$2
C-17	Grape,Muscadine Bronze,pint basket	\$5	\$3	\$2
C-18	Kiwi, Plate of 3	\$5	\$3	\$2
C-19	Pears, Plate of 5	\$5	\$3	\$2

### ***Best Fruit and Nut Centerpiece for the Table***

Objective is to create an attractive display of fruits and nuts

- 1 Participants are allowed to purchase 1 of the 3 required minimum fruit or nut types. The other 2 items must be grown by exhibitor.
- 2 No artificial produce allowed...entry will be disqualified. fillers for the overall design.
- 3 No artificial produce allowed...entry will be disqualified.
- 4 Items must be exhibited in a basket or other floral arrangement container.

C-34	Best Fruit and Nut Centerpiece for the Table Arrangement	\$16	\$12	\$8
------	---	------	------	-----

### ***Department D Foilage & Flowering Plants***

All house plant exhibits must have been propagated and grown by the exhibitor. All exhibits must include a 3 x 5" card on which is stated the name of plant, date propagated, method used, and source of plant material.

		1st	2nd	3rd
D-1	D01: Hanging Basket, Fern	\$5	\$3	\$2
D-2	D02: Hanging Basket, Foliage	\$5	\$3	\$2
D-3	D03: Hanging Basket, Flowering	\$5	\$3	\$2
D-4	D04: Potted Plant, African Violet	\$5	\$3	\$2
D-5	D05: Potted Plant, Amaryllis	\$5	\$3	\$2
D-6	D06: Potted Plant, Angel Trumpet	\$5	\$3	\$2
D-7	D07: Potted Plant, Arum	\$5	\$3	\$2
D-8	D08: Potted Plant, Aster	\$5	\$3	\$2
D-9	D09: Potted Plant, Begonia, flowering	\$5	\$3	\$2
D-10	D10: Potted Plant, Begonia, foliage type	\$5	\$3	\$2
D-11	D11: Potted Plant, Bromelaid in flower	\$5	\$3	\$2
D-12	D12: Potted Plant,Bromelaid, foliage type	\$5	\$3	\$2
D-13	D13: Potted Plant, Bulbs in Flower	\$5	\$3	\$2
D-14	D14: Potted Plant, Cacti in Bloom	\$5	\$3	\$2
D-15	D15: Potted Plant, Cacti, foliage type	\$5	\$3	\$2
D-16	D16: Potted Plant, Carex	\$5	\$3	\$2
D-17	D17: Potted Plant, Carnivorous- Other Type	\$5	\$3	\$2
D-18	D18: Potted Plant, Celosia	\$5	\$3	\$2
D-19	D19: Potted Plant, Citrus	\$5	\$3	\$2
D-20	D20: Potted Plant, Clivia	\$5	\$3	\$2
D-21	D21: Potted Plant, Coleus	\$5	\$3	\$2



D-22	Potted Plant, Colocasia (Elephant Ear)	\$5	\$3	\$2
D-23	Potted Plant, Cosmos	\$5	\$3	\$2
D-24	Potted Plant, Croton (Joseph Coat)	\$5	\$3	\$2
D-25	Potted Plant, Dahlia	\$5	\$3	\$2
D-26	Potted Plant, Daisy	\$5	\$3	\$2
D-27	Potted Plant, Dianthus - Pinks	\$5	\$3	\$2
D-28	Potted Plant, Diffenbachia (Dumbcane)	\$5	\$3	\$2
D-29	Potted Plant, Dracena	\$5	\$3	\$2
D-30	Potted Plant, Fern - Asparagus	\$5	\$3	\$2
D-31	Potted Plant, Fern - Asparagus - Foxtail	\$5	\$3	\$2
D-32	Potted Plant, Fern - Boston	\$5	\$3	\$2
D-33	Potted Plant, Fern - Staghorn	\$5	\$3	\$2
D-34	Potted Plant, Ficus - Rubber Plant	\$5	\$3	\$2
D-35	Potted Plant, Ficus - Weeping Fig	\$5	\$3	\$2
D-36	Potted Plant, Geranium	\$5	\$3	\$2
D-37	Potted Plant, Gaillardia	\$5	\$3	\$2
D-38	Potted Plant, Ginger	\$5	\$3	\$2
D-39	Potted Plant, Heuchera (Lenten Rose)	\$5	\$3	\$2
D-40	Potted Plant, Horsetail	\$5	\$3	\$2
D-41	Potted Plant, Hosta	\$5	\$3	\$2
D-42	Potted Plant, Impatiens, Flowering Type	\$5	\$3	\$2
D-43	Potted Plant, Impatiens, Foliage Type	\$5	\$3	\$2
D-44	Potted Plant, Jerusalem Cherry	\$5	\$3	\$2
D-45	Potted Plant, Macrantha - Prayer Plant	\$5	\$3	\$2
D-46	Potted Plant, Orchid	\$5	\$3	\$2
D-47	Potted Plant, Ornamental Grass, Any Type	\$5	\$3	\$2
D-48	Potted Plant, Ornamental Pepper with Colorful Fruit	\$5	\$3	\$2
D-49	Potted Plant, Oxalis	\$5	\$3	\$2
D-50	Potted Plant, Palm	\$5	\$3	\$2
D-51	Potted Plant, Petunia	\$5	\$3	\$2
D-52	Potted Plant, Philodendron	\$5	\$3	\$2
D-53	Potted Plant, Pothos	\$5	\$3	\$2
D-54	Potted Plant, Rose, Potted Miniature	\$5	\$3	\$2
D-55	Potted Plant, Rose, Potted in Bloom	\$5	\$3	\$2
D-56	Potted Plant, Schefflera	\$5	\$3	\$2
D-57	Potted Plant, Shamrock	\$5	\$3	\$2
D-58	Potted Plant, Spathiphyllum (Peace Lily)	\$5	\$3	\$2
D-59	Potted Plant, Ti Plant	\$5	\$3	\$2
D-60	Potted Plant, Tradescantia (Wandering Jew)	\$5	\$3	\$2
D-61	Vines	\$5	\$3	\$2
D-62	Succulents, Aloe	\$5	\$3	\$2
D-63	Succulent, Any Other	\$5	\$3	\$2
D-64	Succulents, Hens and Chicks	\$5	\$3	\$2
D-65	Succulents, Hoya	\$5	\$3	\$2
D-66	Succulents, Jade	\$5	\$3	\$2
D-67	Succulents, Kalanchoe	\$5	\$3	\$2
D-68	Succulents, Peperomia	\$5	\$3	\$2
D-69	Succulents, Pregnant Onion	\$5	\$3	\$2
D-70	Succulents, Sansevieria (Snake Plant)	\$5	\$3	\$2
D-71	Succulents, Sedum	\$5	\$3	\$2
D-72	Succulents, String of Pearls	\$5	\$3	\$2
D-73	Any Other Flowering Potted Plant	\$5	\$3	\$2
D-74	Any Other Foliage Potted Plant	\$5	\$3	\$2
D-75	Most Unusual Flowering Plant	\$5	\$3	\$2
D-76	Most Unusual Foliage Plant	\$5	\$3	\$2

#### Department DA Specimen Cut Flowers

DA-01	Berries (1 Stem)	\$5	\$3	\$2
DA-02	Best Cut Celosia - cocks comb	\$5	\$3	\$2
DA-03	Best Cut Celosia - feathered	\$5	\$3	\$2
DA-04	Best Cut Chrysanthemum (one stem)	\$5	\$3	\$2
DA-05	Best Cut Marigold (one stem)	\$5	\$3	\$2
DA-06	Best Cut Zinnia (one stem)	\$5	\$3	\$2
DA-07	Bouquet - mixed varieties - cut in vase	\$5	\$3	\$2
DA-08	Cosmos	\$5	\$3	\$2
DA-09	Dahlia (one stem)	\$5	\$3	\$2
DA-10	Daisy-Any other variety	\$5	\$3	\$2
DA-11	Daisy - Gerber	\$5	\$3	\$2
DA-12	Double Flowers (3 blooms - one variety)	\$5	\$3	\$2
DA-13	Dried Flower Arrangement	\$5	\$3	\$2
DA-14	Fresh Flower Arrangement (1 or more)	\$5	\$3	\$2
DA-15	Gaillardia	\$5	\$3	\$2
DA-16	Impatiens - (Single bloom 1 stem)	\$5	\$3	\$2
DA-17	Impatiens- (Double Bloom 1 stem)	\$5	\$3	\$2
DA-18	Lantana	\$5	\$3	\$2
DA-19	Orchids	\$5	\$3	\$2
DA-20	Ornamental Pepper	\$5	\$3	\$2
DA-21	Roses - Any Other Color	\$5	\$3	\$2
DA-22	Roses, Confederate	\$5	\$3	\$2
DA-23	Roses - Pink	\$5	\$3	\$2
DA-24	Roses - Red	\$5	\$3	\$2
DA-25	Roses - miniature	\$5	\$3	\$2
DA-26	Roses - Yellow	\$5	\$3	\$2
DA-27	Salvia (1 stem)	\$5	\$3	\$2
DA-28	Single Flower (3 blooms - one variety)	\$5	\$3	\$2
DA-29	Snapdragon	\$5	\$3	\$2
DA-30	Sunflower	\$5	\$3	\$2

#### Department DB Christmas Trees

Rules: Trees must have been grown in New Hanover, Pender or Brunswick counties. Trees entered must be shaped and sheared according to Cooperative Extension Service guidelines or face disqualification.

		1st	2nd	3rd
DB-1	DB1: Best Decorated Tree	\$50	\$25	\$15
DB-2	DB2: Cedar	\$25	\$15	\$10
DB-3	DB3: Live Christmas Wreath Decorated	\$25	\$15	\$10
DB-4	DB4: Virginia Pine	\$25	\$15	\$10
DB-5	DB5: White Pine	\$25	\$15	\$10



## DIVISION II HOME ECONOMICS

### Department E Culinary

#### Class I - Conserved Products

Exhibits will be ruled out when not in standard jars. Fruits and pickles should be processed in boiling water bath. Low acid vegetables and meats must be processed in a pressure canner. There may be no more than two entries by the same person in the same Division/Category.

- 1 Only exhibit processed after last year's fair may be entered. Exhibitor MUST follow NC Cooperative Extension Service guidelines for processing food.
- 2 Pint or quart quantities may be exhibited but pints are preferable. All exhibits must be in standard clear (not tinted) jars to qualify for judging. Standard jars are those purchased specifically for canning purposes. Please remove screw bands, Jars must be clean, not sticky. Used canning jars in good condition.
- 3 ALL EXHIBITS MUST be labeled with the following info:  
Example:  
Name of Product - Sliced Carrots  
Date Processed - September 10, 2019  
Method of preparation (hot/cold) - Hot pack  
Method of processing  
  1. Hot water bath or canner - pressure canner
  2. lbs of pressure if canner - 11 lbs
  3. Minutes of processing - 25 minutes (pint)
NO OPEN KETTLE CANNING ACCEPTED!! This is NOT an acceptable method of processing home canned foods.

#### Score Card for Fruits and Vegetables

Color.....25 points  
Liquid.....15 points  
Appearance.....25 points  
Appropriate Size.....15 points  
Pack.....10 points  
Container.....10 points  
Total.....100 points

For youth entry, please add a "Y" after each division category on entry. Example E-1Y - Apples (whole or Sliced)  
The canned meat category is for adults only.

		Adult & Youth		
A. Canned Fruits (Pints or Quarts)		1st	2nd	3rd
E-1	Canned Fruit - Apples (whole or sliced)	\$5	\$3	\$2
E-2	Canned Fruit - Applesauce	\$5	\$3	\$2
E-3	Canned Fruit - Blackberries or Raspberries	\$5	\$3	\$2
E-4	Canned Fruit - Figs	\$5	\$3	\$2
E-5	Canned Fruit - Grapes	\$5	\$3	\$2
E-6	Canned Fruit - Huckleberries or Blueberries	\$5	\$3	\$2
E-7	Canned Fruit - Peaches	\$5	\$3	\$2
E-8	Canned Fruit - Pears	\$5	\$3	\$2
B. Canned Vegetables (Pints or Quarts)				
E-9	Canned Vegetables - Beans - Lima	\$5	\$3	\$2
E-10	Canned Vegetables - Beans - String	\$5	\$3	\$2
E-11	Canned Vegetables - Beets	\$5	\$3	\$2
E-12	Canned Vegetables - Carrots	\$5	\$3	\$2

E-13	Canned Vegetables - Corn (pints only)	\$5	\$3	\$2
E-14	Canned Vegetables - Egg Plant	\$5	\$3	\$2
E-15	Canned Vegetables - Greens	\$5	\$3	\$2
E-16	Canned Vegetables - Okra	\$5	\$3	\$2
E-17	Canned Vegetables - Peas - Crowder	\$5	\$3	\$2
E-18	Canned Vegetables - Peas - Field	\$5	\$3	\$2
E-19	Canned Vegetables - Peas - Green	\$5	\$3	\$2
E-20	Canned Vegetables - Peppers	\$5	\$3	\$2
E-21	Canned Vegetables - Pimento Peppers (pint or 1/2 pint)	\$5	\$3	\$2
E-22	Canned Vegetables - Potatoes- Sweet	\$5	\$3	\$2
E-23	Canned Vegetables - Potatoes - White	\$5	\$3	\$2
E-24	Canned Vegetables - Pumpkin (cubes or puree)	\$5	\$3	\$2
E-25	Canned Vegetables - Squash	\$5	\$3	\$2
E-26	Canned Vegetables - Tomatoes (in tomato juice - no juice)	\$5	\$3	\$2
E-27	Canned Vegetables - Tomato Puree	\$5	\$3	\$2

- C. Canned Meat (Meat, Fish, Poultry must be canned in pressure canner) The canned meat category is for adults only.

#### Score Card for Fruits and Vegetables

Appearance.....25 points  
Pack.....15 points  
Size & Uniformity of Pieces.....15 Points  
Liquid or Fat.....15 Points  
Texture.....20 Points  
Container.....10 Points  
Total.....100 points

E-28	Canned Meat - Beef	\$5	\$3	\$2
E-29	Canned Meat - Chicken	\$5	\$3	\$2
E-30	Canned Meat - Pork (Chops, Spareribs, Tenderloin)	\$5	\$3	\$2
E-31	Canned Meat - Sausage	\$5	\$3	\$2
E-32	Canned Meat - Seafood	\$5	\$3	\$2



- D. Preserves** - Preserves are whole fruits or large pieces in thick syrup that sometimes is slightly jellied  
NO PARAFFIN

**Score Card for All Preserves**

**Fruit:**

Shape.....	10 points
Clearness & Color.....	15 points
Flavor.....	15 points
Texture.....	10 points
Pack.....	5 points

**Syrup:**

Clearness & Color.....	10 points
Flavor.....	15 points
Consistency.....	10 points
Proportion of Juice.....	10 points
Total.....	100 points

	Adult			Youth		
	1st	2nd	3rd	1st	2nd	3rd
<b>D. Preserves</b>						
E-33 Blackberry	\$5	\$3	\$2	\$3	\$2	\$1
E-34 Cataloupe Rind	\$5	\$3	\$2	\$3	\$2	\$1
E-35 Cherry	\$5	\$3	\$2	\$3	\$2	\$1
E-36 Crabapple	\$5	\$3	\$2	\$3	\$2	\$1
E-37 Fig	\$5	\$3	\$2	\$3	\$2	\$1
E-38 Grape	\$5	\$3	\$2	\$3	\$2	\$1
E-39 Peach	\$5	\$3	\$2	\$3	\$2	\$1
E-40 Pear	\$5	\$3	\$2	\$3	\$2	\$1
E-41 Pumpkin	\$5	\$3	\$2	\$3	\$2	\$1
E-42 Strawberry	\$5	\$3	\$2	\$3	\$2	\$1
E-43 Turnip	\$5	\$3	\$2	\$3	\$2	\$1
E-44 Watermelon	\$5	\$3	\$2	\$3	\$2	\$1

**E. Jams, Conserves, Marmalades & Butter**

**Jams** - Made from crushed or ground fruit, it almost holds its shape but is not jelly firm.

**Conserves** - Glorified jams made from mixtures of fruits, usually including citrus. Raisins & nuts can also be added.

**Marmalades** - Tender jelly with small pieces of citrus fruit distributed evenly throughout.

**Butters** - Fruit pulp cooked with sugar until thick. All processed boiling water bath. NO PARAFFIN (air tight seals)

**Score Cards:**

Smoothness.....	25 points
Flavor.....	30 points
Consistency & Texture.....	30 points
Color & Clearness.....	10 points
Container.....	05 points
Total.....	100 points

	Adult			Youth		
	1st	2nd	3rd	1st	2nd	3rd
<b>E. Jams, Conserves</b>						
<b>Marmalades &amp; Butter</b>						
E-45 Blackberry Marmalade	\$5	\$3	\$2	\$3	\$2	\$1
E-46 Blueberry Jam	\$5	\$3	\$2	\$3	\$2	\$1
E-47 Citrus Marmalade	\$5	\$3	\$2	\$3	\$2	\$1
E-48 Fig Marmalade or Conserve	\$5	\$3	\$2	\$3	\$2	\$1
E-49 Fig Jam	\$5	\$3	\$2	\$3	\$2	\$1
E-50 Grape Marmalade or Conserve	\$5	\$3	\$2	\$3	\$2	\$1
E-51 Grape Jam	\$5	\$3	\$2	\$3	\$2	\$1
E-52 Peach Marmalade or Conserve	\$5	\$3	\$2	\$3	\$2	\$1
E-53 Peach Jam	\$5	\$3	\$2	\$3	\$2	\$1
E-54 Pear Marmalade	\$5	\$3	\$2	\$3	\$2	\$1
E-55 Plum Marmalade	\$5	\$3	\$2	\$3	\$2	\$1
E-56 Pumpkin Marmalade or Cons	\$5	\$3	\$2	\$3	\$2	\$1

	Adult			Youth		
	1st	2nd	3rd	1st	2nd	3rd
E-57 Raspberry Marmalade	\$5	\$3	\$2	\$3	\$2	\$1
E-58 Strawberry Jam	\$5	\$3	\$2	\$3	\$2	\$1
E-59 Strawberry Jam Marmalade	\$5	\$3	\$2	\$3	\$2	\$1
E-60 Other Jam, Marmalade or Cons	\$5	\$3	\$2	\$3	\$2	\$1
E-61 Apple Butter	\$5	\$3	\$2	\$3	\$2	\$1
E-62 Peach Butter	\$5	\$3	\$2	\$3	\$2	\$1
E-63 Pear Butter	\$5	\$3	\$2	\$3	\$2	\$1
E-64 Other Butter	\$5	\$3	\$2	\$3	\$2	\$1

- F. Jelly** (Jars should be sealed or a thin layer of paraffin should be over jelly)

**Score Card**

Color.....	10 points
Clearness.....	10 points
Lack of Crystals.....	10 points
Flavor.....	30 points
Consistency.....	35 points
Container.....	5 points
Total.....	100 points

	Adult			Youth		
	1st	2nd	3rd	1st	2nd	3rd
E-65 Apple Jelly	\$5	\$3	\$2	\$3	\$2	\$1
E-66 Blackberry Jelly	\$5	\$3	\$2	\$3	\$2	\$1
E-67 Cranberry Jelly	\$5	\$3	\$2	\$3	\$2	\$1
E-68 Grape Jelly	\$5	\$3	\$2	\$3	\$2	\$1
E-69 Mint Jelly	\$5	\$3	\$2	\$3	\$2	\$1
E-70 Other Jelly	\$5	\$3	\$2	\$3	\$2	\$1
E-71 Pepper Jelly	\$5	\$3	\$2	\$3	\$2	\$1
E-72 Plum Jelly	\$5	\$3	\$2	\$3	\$2	\$1

- G. Juices, Ketchups, Sauces** (Processed in boiling water bath & must have air tight seals)

**Score Cards:**

Color.....	30 points
Stability.....	15 points
Absence of Defects.....	15 points
Flavor.....	35 points
Container.....	05 points
Total.....	100 points

	Adult			Youth		
	1st	2nd	3rd	1st	2nd	3rd
E-73 Apple Juice	\$5	\$3	\$2	\$3	\$2	\$1
E-74 Blackberry Juice	\$5	\$3	\$2	\$3	\$2	\$1
E-75 Grape Juice	\$5	\$3	\$2	\$3	\$2	\$1
E-76 Tomato Juice	\$5	\$3	\$2	\$3	\$2	\$1
E-77 Tomato Ketchup	\$5	\$3	\$2	\$3	\$2	\$1
E-78 Spaghetti Sauce	\$5	\$3	\$2	\$3	\$2	\$1
E-79 BBQ Sauce	\$5	\$3	\$2	\$3	\$2	\$1
E-80 Chili Sauce	\$5	\$3	\$2	\$3	\$2	\$1
E-81 Salsa	\$5	\$3	\$2	\$3	\$2	\$1
E-82 Sauce - Other	\$5	\$3	\$2	\$3	\$2	\$1



**G. Pickles and Relishes (Must be able to open)**

**Score Cards:**

Size & Shape.....	10 points
Flavor.....	30 points
Texture.....	30 points
Color.....	15 points
Proportion of Pickle to Liquid.....	10 points
Container.....	05 points
Total.....	100 points

		Adult			Youth		
	Pickles	1st	2nd	3rd	1st	2nd	3rd
E-83	Bread & Butter	\$5	\$3	\$2	\$3	\$2	\$1
E-84	Chow Chow	\$5	\$3	\$2	\$3	\$2	\$1
E-85	Churney	\$5	\$3	\$2	\$3	\$2	\$1
E-86	Cubumber (Cubed)	\$5	\$3	\$2	\$3	\$2	\$1
E-87	Cucumber (Dill)	\$5	\$3	\$2	\$3	\$2	\$1
E-88	Cucumber ( Sliced)	\$5	\$3	\$2	\$3	\$2	\$1
E-89	Cucumber (Whole)	\$5	\$3	\$2	\$3	\$2	\$1
E-90	Fruit Pickle	\$5	\$3	\$2	\$3	\$2	\$1
E-91	Squash Pickle	\$5	\$3	\$2	\$3	\$2	\$1
E-92	Sweet Sauces Pickles	\$5	\$3	\$2	\$3	\$2	\$1
E-93	Vegetable Pickles	\$5	\$3	\$2	\$3	\$2	\$1

		Adult			Youth		
	Relishes	1st	2nd	3rd	1st	2nd	3rd
E-94	Artichoke	\$5	\$3	\$2	\$3	\$2	\$1
E-95	Corn	\$5	\$3	\$2	\$3	\$2	\$1
E-96	Pear	\$5	\$3	\$2	\$3	\$2	\$1
E-97	Pepper	\$5	\$3	\$2	\$3	\$2	\$1
E-98	Squash	\$5	\$3	\$2	\$3	\$2	\$1
E-99	Other	\$5	\$3	\$2	\$3	\$2	\$1

**Class II - Breads, Cakes & Candies**

Enter Whole cake only except for decorated cakes with premium numbers (E-194-204). Decorated cakes are the only baked goods that will be released; all other baked goods become the property of the fair. Bring cakes and breads in cardboard boxes. Place cakes on pieces of cardboard and cover with plastic wrap or wax paper. Accurate recipies must be submitted with all entries. Cookies and candy should be on a strong paper plate or cardboard and wrapped securely. Decorated cakes should be entered in category or predominant frosting. Cakes must be made from scratch and not from prepared cake mix. Pies should be in aluminum foil pans. No commercial products allowed.



**Score Card for Cakes**

Appearance.....	25 points
Pleasing appearance	
Slightly rounded top	
Unfrosted: Smooth, uniform, light brown	
Frosted: Free from stickiness, crystals or crustiness	
Texture.....	25 Points
Fine even grain	
Thin cell walls	
Feathery light	
Crumb.....	25 Points
Smooth & Velvety	
Slightly moist	
Light and tender	
Pleasing color	
Flavor.....	25 Points
Delicate, well blended flavor	
Sweet flavor	
Free from strong flavor	
Tastes good	

		Adult			Youth		
	A. Cakes (Tube or Loaf Cakes)	1st	2nd	3rd	1st	2nd	3rd
E-100	Angel Food (un-iced)	\$11	\$8	\$4	\$6	\$3	\$2
E-101	Apple Cake	\$11	\$8	\$4	\$6	\$3	\$2
E-102	Chocolate Cake	\$11	\$8	\$4	\$6	\$3	\$2
E-103	Chocolate Pound Cake (Un-iced)	\$11	\$8	\$4	\$6	\$3	\$2
E-104	Fruit Cake	\$11	\$8	\$4	\$6	\$3	\$2
E-105	Mock Point Cake (milk, cheese, lemon pudding)	\$11	\$8	\$4	\$6	\$3	\$2
E-106	Open Class (any type tube or loaf cake no mix	\$11	\$8	\$4	\$6	\$3	\$2
E-107	True Pound Cake (only butter, suger, eggs & flour)	\$11	\$8	\$4	\$6	\$3	\$2
E-108	Coconut layer	\$11	\$8	\$4	\$6	\$3	\$2
E-109	Layer cake (any kind, cooked listing	\$11	\$8	\$4	\$6	\$3	\$2
E-110	Open Class (anything not listed)	\$11	\$8	\$4	\$6	\$3	\$2
<b>No Mix</b>							
E-111	Cake, decorated for wedding (buttercream frosting)	\$12	\$8	\$6	\$6	\$3	\$2
E-112	Cake, large decorated novelty (buttercream frosting)	\$12	\$8	\$6	\$6	\$3	\$2
E-113	Cake, large decorated novelty (colorful frosting)	\$12	\$8	\$6	\$6	\$3	\$2







		Adult			Youth					Adult			Youth		
		1st	2nd	3rd	1st	2nd	3rd			1st	2nd	3rd	1st	2nd	3rd
F-22	Girls dress school or sporty ages 6-12	\$5	\$4	\$3	\$3	\$2	\$1	<b>Crocheted Garments</b>							
F-23	Girls jacket ages 6-12	\$5	\$4	\$3	\$3	\$2	\$1	G-9	Adult Dress	\$4	\$3	\$2	\$4	\$3	\$1
F-24	Girls Lingerie ages 6-12	\$5	\$4	\$3	\$3	\$2	\$1	G-10	Baby Dress	\$3	\$2	\$1	\$3	\$2	\$1
F-25	Girls short-slacks ages 6-12	\$5	\$4	\$3	\$3	\$2	\$1	G-11	Baby Set	\$4	\$3	\$2	\$3	\$2	\$1
F-26	Girls suit ages 6-12	\$6	\$5	\$4	\$3	\$2	\$1	G-12	Booties	\$4	\$3	\$1	\$3	\$2	\$1
F-27	Infant Bonnett Fabric	\$5	\$3	\$2	\$3	\$2	\$1	G-13	Cap	\$3	\$2	\$1	\$3	\$2	\$1
F-28	Infant Booties	\$5	\$3	\$2	\$3	\$2	\$1	G-14	Doll Clothing	\$4	\$3	\$2	\$3	\$2	\$1
F-29	Infant Dress	\$5	\$3	\$2	\$3	\$2	\$1	G-15	Pillows	\$4	\$3	\$2	\$3	\$2	\$1
F-30	Infant Gown	\$5	\$3	\$2	\$3	\$2	\$1	G-16	Sacque	\$3	\$2	\$1	\$3	\$2	\$1
F-31	Infant Fabric Sacque	\$5	\$3	\$2	\$3	\$2	\$1	G-17	Shawl/Stole	\$5	\$3	\$2	\$4	\$3	\$1
F-32	Infant slip	\$5	\$3	\$2	\$3	\$2	\$1	G-18	Adult Sweater	\$5	\$3	\$2	\$4	\$3	\$1
F-33	Knit Dress	\$5	\$4	\$3	\$3	\$2	\$1	G-19	Childrens Sweater	\$5	\$3	\$2	\$4	\$3	\$1
F-34	Knit jacket	\$5	\$4	\$3	\$3	\$2	\$1	G-20	Weaving	\$3	\$2	\$1	\$3	\$2	\$1
F-35	Knit jumpsuit	\$5	\$4	\$3	\$3	\$2	\$1	<b>Hand Knitted Garments</b>							
F-36	Knit skirt	\$5	\$4	\$3	\$3	\$2	\$1	G-21	2 Piece Baby Set6	\$4	\$3	\$1	\$4	\$3	\$2
F-37	Knit suit	\$5	\$4	\$3	\$3	\$2	\$1	G-22	Booties	\$4	\$3	\$1	\$3	\$2	\$1
F-38	Leather & Suede garments	\$5	\$4	\$3	\$3	\$2	\$1	G-23	Caps	\$4	\$3	\$1	\$3	\$2	\$1
F-39	Mens wear jacket or vest	\$7	\$5	\$3	\$3	\$2	\$1	G-24	Doll Clothes	\$4	\$3	\$1	\$3	\$2	\$1
F-40	Mens wear slacks	\$7	\$3	\$2	\$3	\$2	\$1	G-25	Dress	\$4	\$3	\$1	\$4	\$3	\$2
F-41	Mens wear sleepwear	\$5	\$4	\$3	\$3	\$2	\$1	G-26	Sacque Bunting	\$4	\$3	\$1	\$3	\$2	\$1
F-42	Mens wear sportsshirt	\$5	\$4	\$3	\$3	\$2	\$1	G-27	Poncho/Shawl	\$5	\$3	\$2	\$3	\$2	\$1
F-43	Means wear sports wear	\$5	\$4	\$3	\$3	\$2	\$1	G-28	Sweater Childrens	\$5	\$3	\$2	\$3	\$2	\$1
F-44	Mens wear suit lined	\$10	\$7	\$3	\$3	\$2	\$1	G-29	Sweater Mens	\$5	\$3	\$2	\$4	\$3	\$2
F-45	Mens wear suit unlined	\$8	\$5	\$4	\$3	\$2	\$1	G-30	Sweater Womens	\$5	\$3	\$2	\$4	\$3	\$2
F-46	Pants women's wear	\$5	\$4	\$3	\$3	\$2	\$1	<b>Household Items</b>							
F-47	Pantsuit womens wear	\$5	\$4	\$3	\$3	\$2	\$1	G-31	All Entries	\$5	\$3	\$2	\$4	\$3	\$2
F-48	Slacks or shorts womens	\$5	\$4	\$3	\$3	\$2	\$1	<b>Needlecraft</b>							
F-49	Sleepwear	\$5	\$4	\$3	\$3	\$2	\$1	G-32	Appliques	\$5	\$4	\$2	\$4	\$3	\$1
F-50	Slips whole or half	\$5	\$4	\$3	\$3	\$2	\$1	G-33	Baby Toys	\$5	\$4	\$2	\$4	\$3	\$1
F-51	Skin woven	\$5	\$4	\$3	\$3	\$2	\$1	G-34	Candlewicking	\$5	\$4	\$2	\$4	\$3	\$1
F-52	Suit lined	\$6	\$5	\$4	\$3	\$2	\$1	G-35	Counted Cross Stitch	\$5	\$4	\$2	\$4	\$3	\$1
F-53	Suit unlined	\$5	\$4	\$3	\$3	\$2	\$1	G-36	Crocheted	\$5	\$4	\$2	\$4	\$3	\$1
F-54	Tops	\$5	\$4	\$3	\$3	\$2	\$1	G-37	Crewel	\$5	\$4	\$2	\$4	\$3	\$1

#### Department G - Needlework

Unless the article is of good quality and in usable condition, no premium will be awarded. There are no special exhibits for antiques because proper care cannot be given to exhibitors' space. All entries must be completed during the current year. All entries must be entered and exhibited in clear plastic. There may be no more than two entries by the same person in the same Division/Category.

**For Youth entry, please add a "Y" after each division category on entry.**

**Example: G-1Y Crocheted**

		Adult			Youth					Adult			Youth		
		1st	2nd	3rd	1st	2nd	3rd			1st	2nd	3rd	1st	2nd	3rd
<b>Afghan</b>															
G-1	Afghan - Baby	\$5	\$4	\$3	\$4	\$3	\$2	G-51	Quilting	\$5	\$4	\$2	\$4	\$3	\$1
G-2	Afghan - Crocheted	\$10	\$7	\$5	\$9	\$6	\$3	G-52	Smocked	\$5	\$4	\$2	\$4	\$3	\$1
G-3	Afghan - Handwoven loom	\$10	\$7	\$5	\$9	\$6	\$3	G-53	Swedish Daming	\$5	\$4	\$2	\$4	\$3	\$1
G-4	Afghan -Knitted solid or 2 colors	\$10	\$7	\$5	\$9	\$6	\$3	G-54	Tatting	\$5	\$4	\$2	\$4	\$3	\$1
<b>Bedspreads</b>								G-55	Wall Hanging	\$5	\$4	\$2	\$4	\$3	\$1
G-5	Bedspread - candlewick	\$10	\$7	\$5	\$9	\$6	\$3								
G-6	Bedspread - crocheted	\$10	\$7	\$5	\$9	\$6	\$3								
G-7	Bedspread - cross stitch	\$10	\$7	\$5	\$9	\$6	\$3								
G-8	Bedspread - embroidered	\$10	\$7	\$5	\$9	\$6	\$3								



		Adult			Youth		
Quilts		1st	2nd	3rd	1st	2nd	3rd
G-56	Cotton Applique	\$10	\$7	\$5	\$9	\$6	\$3
G-57	Cotton Patchwork	\$10	\$7	\$5	\$9	\$6	\$3
G-58	Cotton Cross-Stitch	\$10	\$7	\$5	\$9	\$6	\$3
G-59	Coverlet Tacked	\$10	\$7	\$5	\$9	\$6	\$3
G-60	Embroidered	\$10	\$7	\$5	\$9	\$6	\$3
<b>Rugs</b>							
G-61	Braided	\$8	\$6	\$4	\$6	\$4	\$2
G-62	Crocheted	\$8	\$6	\$4	\$6	\$4	\$2
G-63	Hooked, Wool	\$8	\$6	\$4	\$6	\$4	\$2
G-64	Latched	\$8	\$6	\$4	\$6	\$4	\$2
G-65	Woven	\$8	\$6	\$4	\$6	\$4	\$2

#### Department H - Arts & Crafts

All entries must be completed during the current year. All entries must be entered or exhibited in clear plastic. There may be no more than two entries by the same person in the same Division/Category. **For youth entry, please add a "Y" after each division category on entry. Ex. H-1Y**

		Adult			Youth		
<b>Baskets</b>		1st	2nd	3rd	1st	2nd	3rd
H-1	Covered	\$5	\$4	\$2	\$4	\$3	\$2
H-2	Uncovered	\$5	\$4	\$2	\$4	\$3	\$2
<b>Beadcraft</b>							
H-3	All entries	\$3	\$2	\$1	\$3	\$2	\$1
<b>Bread Dough</b>							
H-4	All entries	\$4	\$2	\$1	\$3	\$2	\$1
<b>Ceramics</b>							
H-5	All free hand	\$5	\$4	\$2	\$3	\$2	\$1
H-6	Antique Finish	\$5	\$4	\$2	\$3	\$2	\$1
H-7	Art Glaze	\$5	\$4	\$2	\$3	\$2	\$1
H-8	Clear Glaze	\$5	\$4	\$2	\$3	\$2	\$1
H-9	Decal	\$5	\$4	\$2	\$3	\$2	\$1
H-10	Glaze Stain Combination	\$5	\$4	\$2	\$3	\$2	\$1
H-11	Lava or Foam Finish	\$5	\$4	\$2	\$3	\$2	\$1
H-12	Matt Finish	\$5	\$4	\$2	\$3	\$2	\$1
H-13	Molded Plaster	\$5	\$4	\$2	\$3	\$2	\$1
H-14	Other	\$5	\$4	\$2	\$3	\$2	\$1
H-15	Pastel Finish	\$5	\$4	\$2	\$3	\$2	\$1
H-16	Stains	\$5	\$4	\$2	\$3	\$2	\$1
H-17	Stain Finish	\$5	\$4	\$2	\$3	\$2	\$1
H-18	Under Glaze	\$5	\$4	\$2	\$3	\$2	\$1
<b>Christmas Decorations</b>							
H-19	All entries	\$4	\$2	\$1	\$3	\$2	\$1
<b>Dolls</b>							
H-20	All entries	\$4	\$2	\$1	\$3	\$2	\$1
<b>Frames - Picture</b>							
H-21	All entries	\$4	\$2	\$1	\$3	\$2	\$1
<b>Jewelry</b>							
H-22	Charms & Beads	\$3	\$2	\$1	\$3	\$2	\$1
H-23	Glass	\$3	\$2	\$1	\$3	\$2	\$1
H-24	Jewels/Crystals	\$3	\$2	\$1	\$3	\$2	\$1
H-25	Organic	\$3	\$2	\$1	\$3	\$2	\$1
H-26	Wood	\$3	\$2	\$1	\$3	\$2	\$1
<b>Lamp Shades</b>							
H-27	All entries	\$4	\$2	\$1	\$3	\$2	\$1
<b>Leatherwork</b>							
H-28	All entries	\$3	\$2	\$1	\$3	\$2	\$1

		Adult			Youth		
<b>Macrame</b>							
H-29	All Entries	\$3	\$2	\$1	\$3	\$2	\$1
H-30	Macramae Art - all entries	\$4	\$2	\$1	\$3	\$2	\$1
<b>Metals</b>							
H-31	All Entries	\$3	\$2	\$1	\$3	\$2	\$1
<b>Miscellaneous Other Crafts</b>							
H-32	All Entries	\$3	\$2	\$1	\$3	\$2	\$1
<b>Mosaic</b>							
H-33	All Entries	\$3	\$2	\$1	\$3	\$2	\$1
<b>Paper Crafts</b>							
H-34	All Entries	\$4	\$2	\$1	\$3	\$2	\$1
<b>Pine Needles</b>							
H-35	All Entries	\$3	\$2	\$1	\$3	\$2	\$1
<b>Potpourri</b>							
H-36	All Entries	\$4	\$2	\$1	\$3	\$2	\$1
<b>Pottery</b>							
H-37	All Entries	\$4	\$2	\$1	\$3	\$2	\$1
<b>Recycled</b>							
H-38	All Entries	\$4	\$2	\$1	\$3	\$2	\$1
<b>Sculpturing and Carving</b>							
H-39	Clay	\$4	\$2	\$1	\$3	\$2	\$1
H-40	Decoupage	\$4	\$2	\$1	\$3	\$2	\$1
H-41	Metal	\$3	\$2	\$1	\$3	\$2	\$1
H-42	Plaster	\$4	\$2	\$1	\$3	\$2	\$1
H-43	Porcelain	\$4	\$2	\$1	\$3	\$2	\$1
H-44	Soap	\$3	\$2	\$1	\$3	\$2	\$1
H-45	Wood	\$3	\$2	\$1	\$3	\$2	\$1
<b>Shell Art</b>							
H-46	All Entries	\$4	\$2	\$1	\$3	\$2	\$1
<b>Stained Glass</b>							
H-47	All Entries	\$3	\$2	\$1	\$3	\$2	\$1
<b>String Art</b>							
H-48	All Entries	\$4	\$2	\$1	\$3	\$2	\$1
<b>Stuffed Animals</b>							
H-49	All Entries	\$4	\$2	\$1	\$3	\$2	\$1
<b>Stuffed - Others</b>							
H-50	All Entries	\$4	\$2	\$1	\$3	\$2	\$1
<b>Wax</b>							
H-51	All Entries	\$4	\$2	\$1	\$3	\$2	\$1
<b>Wood Working</b>							
H-52	Bird boxes	\$4	\$2	\$1	\$3	\$2	\$1
H-53	Doll furniture	\$4	\$2	\$1	\$3	\$2	\$1
H-54	Lathe work	\$4	\$2	\$1	\$3	\$2	\$1
H-55	Miscellaneous	\$4	\$2	\$1	\$3	\$2	\$1
<b>Woven Items</b>							
H-56	Baskets	\$3	\$2	\$1	\$3	\$2	\$1
H-57	Chair seat	\$3	\$2	\$1	\$3	\$2	\$1
H-58	Miscellaneous	\$3	\$2	\$1	\$3	\$2	\$1
<b>Wreaths</b>							
H-59	Calico fabric	\$4	\$2	\$1	\$3	\$2	\$1
H-60	Corn shucks	\$4	\$2	\$1	\$3	\$2	\$1
H-61	Other	\$4	\$2	\$1	\$3	\$2	\$1
H-62	Pine cones	\$4	\$2	\$1	\$3	\$2	\$1
H-63	Pine needles	\$4	\$2	\$1	\$3	\$2	\$1
H-64	Ribbon	\$4	\$2	\$1	\$3	\$2	\$1

### Department I - Handi-Crafts

All entries must be completed during the current year. All entries must be entered and exhibited in clear plastic. This division is for the physically and mentally challenged. There may be no more than two entries by the same person in the same Division/Category

		Adult		
		1st	2nd	3rd
I-1	Arts & Crafts	\$2	\$1	Ribbon
I-2	Painting	\$2	\$1	Ribbon

### Department J Painting (Must be Dated)

All exhibits should be dated and signature or initials on lower right hand corner on front. **All pieces of art work done on PAPER need to be matted with poster board (NO FRAMES).** Do not use good mats as they will be stapled. All other articles **MUST** be display ready. No foamcore. Secured tab on back, ready to hang. If no mat or not ready to display, article will be lowered one placing. Enter in clear plastic to keep clean. All chalk and pencil drawings should be sprayed to prevent smudging. All entries must be completed during the current year. There may be no more than two entries by the same person in the same Division/Category. For youth entries, please add a "Y" after each division category on entry.

		Adult			Youth		
		1st	2nd	3rd	1st	2nd	3rd
J-1	Clothing	\$5	\$3	\$2	\$3	\$2	\$1
J-2	Crayon Drawings	\$5	\$3	\$2	\$3	\$2	\$1
J-3	Pen Drawings	\$5	\$3	\$2	\$3	\$2	\$1
J-4	Pencil Drawings	\$5	\$3	\$2	\$3	\$2	\$1
J-5	Other painted	\$5	\$3	\$2	\$3	\$2	\$1
<b>Paintings (no paint by number accepted)</b>							
J-6	Acrylic	\$5	\$3	\$2	\$3	\$2	\$1
J-7	Oil	\$5	\$3	\$2	\$3	\$2	\$1
J-8	Pastel	\$5	\$3	\$2	\$3	\$2	\$1
J-9	Water Color	\$5	\$3	\$2	\$3	\$2	\$1
<b>Wood Painting</b>							
J-10	Stencil	\$5	\$3	\$2	\$3	\$2	\$1
J-11	Tole	\$5	\$3	\$2	\$3	\$2	\$1

### Department K Photography

Note: All photographs to be dated and must have been taken within the last year.

#### Score Card

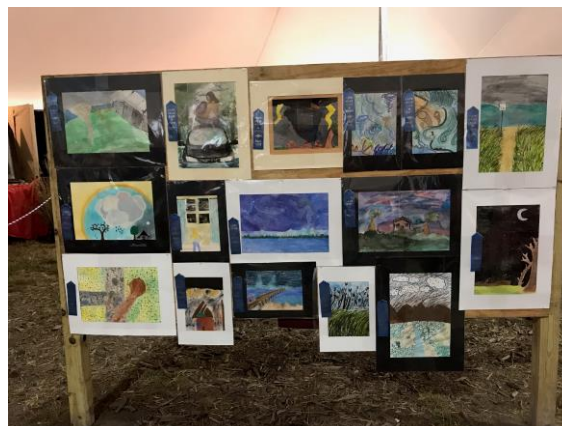
- \* Photos will be judged on the basis of technical quality, composition and storytelling ability.
- \* MAKE SURE your subject matter is appropriate. Any entry found objectionable may be disqualified.
- \* Judge may disqualify or lower a placing if guidelines and entry specifications are not met.
- \* All photos in each lot number must be mounted in white poster board with no more than a 2" margin on all sides. DO NOT USE GLASS, CORRUGATED CARDBOARD OR FOAM BOARD.
- \* Photos must be mounted using rubber cement, glue or staples. The use of photo or art corners is not permitted.
- \* All photographs must be printed on photographic paper.
- \* Digital camera entries must show digital date on picture.
- \* Any entry that does not meet the entry requirements or that is entered in the wrong class will be judged. The exhibitor will receive the appropriate merit ribbon, but no premium money will be rewarded. (Exception: Photos that have been entered in previous years will be disqualified. Photos must be taken in the last year.) **For Youth Entry, please add a "Y" after each division category on entry. Prizes are the same for youth and adult.**

### 1) Adventures with your Automatic or Adjustable Camera

		Adult & Youth		
		1st	2nd	3rd
<b>Action</b>				
K-20	Action - Series of 3	\$5	\$3	\$2
K-21	Action - Single	\$5	\$3	\$2
<b>Black and White</b>				
K-22	Animals and Birds	\$5	\$3	\$2
K-23	Buildings	\$5	\$3	\$2
K-24	Landscape or Seascape	\$5	\$3	\$2
K-25	People (individual or group)	\$5	\$3	\$2
<b>Color</b>				
K-26	Animals and Birds	\$5	\$3	\$2
K-27	Buildings	\$5	\$3	\$2
K-28	Landscape or Seascape	\$5	\$3	\$2
K-29	People (individual or group)	\$5	\$3	\$2
<b>Horticulture</b>				
K-30	Arrangement of 4 - B&W	\$5	\$3	\$2
K-31	Arrangement of 4 - Color	\$5	\$3	\$2
K-32	Single - B&W	\$5	\$3	\$2
K-33	Single - Color	\$5	\$3	\$2
<b>Picture Stories</b>				
K-34	3-4 photos that tell a story	\$5	\$3	\$2

### 2) Adventures with your digital camera

		Adult & Youth		
		1st	2nd	3rd
<b>Action</b>				
K-35	Action - Series of 3	\$5	\$3	\$2
K-36	Action - Single	\$5	\$3	\$2
<b>Black and White</b>				
K-37	Animals and Birds	\$5	\$3	\$2
K-38	Buildings	\$5	\$3	\$2
K-39	Landscape or Seascape	\$5	\$3	\$2
K-40	People (individual or group)	\$5	\$3	\$2
<b>Color</b>				
K-41	Animals and Birds	\$5	\$3	\$2
K-42	Buildings	\$5	\$3	\$2
K-43	Landscape or Seascape	\$5	\$3	\$2
K-44	People (individual or group)	\$5	\$3	\$2
<b>Horticulture</b>				
K-45	Arrangement of 4 - B&W	\$5	\$3	\$2
K-46	Arrangement of 4 - Color	\$5	\$3	\$2
K-47	Single - B&W	\$5	\$3	\$2
K-48	Single - Color	\$5	\$3	\$2
<b>Picture Stories</b>				
K-49	3-4 photos that tell a story	\$5	\$3	\$2





### Department L - Scrapbooking

#### MUST BE 1-2 PAGES

**Judging Emphasis:** Creativity, photo enhancement, eye catching, title, heart felt message, story journaling

Adult & Youth				
		1st	2nd	3rd
L-2	Digital scrapbooking	\$5	\$3	\$2
L-3	Family (baby, heritage, youth)	\$5	\$3	\$2
L-4	Festivities (formal, wedding, birthday, etc.)	\$5	\$3	\$2
L-5	Holiday	\$5	\$3	\$2
L-6	Miscellaneous	\$5	\$3	\$2
L-7	Music, school, sports	\$5	\$3	\$2
L-8	Pets	\$5	\$3	\$2
L-9	Seasons	\$5	\$3	\$2
L-10	Vacations	\$5	\$3	\$2

### Department M - Creative Celebration

Greeting Cards		1st	2nd	3rd
M-2	Anniversary card	\$5	\$3	\$2
M-3	Birthday card	\$5	\$3	\$2
M-4	Get well card	\$5	\$3	\$2
M-5	Holiday card	\$5	\$3	\$2
M-6	Miscellaneous card	\$5	\$3	\$2

#### Gift Wrap (14"x16"x6" or less)

M-7	Birthday	\$5	\$3	\$2
M-8	Holiday	\$5	\$3	\$2
M-9	Miscellaneous	\$5	\$3	\$2
M-10	Wedding/Shower Gift	\$5	\$3	\$2
M-11	Wedding/Shower Party			

#### Invitations (Mailable)

M-12	Anniversary party	\$5	\$3	\$2
M-13	Birthday party	\$5	\$3	\$2
M-14	Holiday party	\$5	\$3	\$2
M-15	Miscellaneous	\$5	\$3	\$2
M-16	Wedding/Shower party	\$5	\$3	\$2

#### Table Decorations

M-17	Birthday	\$5	\$3	\$2
M-18	Holiday	\$5	\$3	\$2
M-19	Miscellaneous	\$5	\$3	\$2
M-20	Table favors	\$5	\$3	\$2
M-21	Wedding/Shower	\$5	\$3	\$2



### DIVISION III ENTOMOLOGY

#### Beekeeping

##### Score Card

Appearance.....	15	points
Cleanliness.....	30	points
Color.....	25	points
Uniformity.....	20	points
Aroma or Texture.....	10	points
Total.....	100	points

Please indicate if entry is Youth (under 19) or Adult division (19 years and older). Prize premiums are the same for Youth and Adult.

Adult & Youth				
A. Products				
		1st	2nd	3rd
O-1	Beeswax	\$4	\$3	\$2
O-2	Beeswax (candles, carvings, models and novelties)	\$4	\$3	\$2
O-3	Beeswax - pollen pint jar	\$4	\$3	\$2
O-4	Propolis	\$4	\$3	\$2
B. Extracted Honey				
N-4	Amber - 10 oz jar or more	\$6	\$5	\$3
N-5	Comb - 10 oz jar or more	\$6	\$5	\$3
N-6	Cream - 10 oz jar or more	\$6	\$5	\$3
N-7	Dark - 10 oz jar or more	\$6	\$5	\$3
N-8	Light - 10 oz jar or more	\$6	\$5	\$3

#### C. Insect Collection

- The display boxes must be 18 3/4 inches wide by 24 3/4 inches long by 3 inches deep (outside measurements) and have a glass or plexiglass cover. Collections are best displayed when mounted along the horizontal axis.
- The collection must be the work of the exhibitor.

#### Criteria for Judging

- General appearance and neatness of arrangement.
  - Care in preparation of the insects.
  - Placing and completeness of labels.
  - Number of orders and specimens of North Carolina insects correctly identified.
- |     | 1st               | 2nd  | 3rd  | 4th/5th |     |
|-----|-------------------|------|------|---------|-----|
| Q-4 | Insect Collection | \$20 | \$15 | \$10    | \$5 |

#### D. Plants

P-1	Nectar producing plants	\$6	\$3	\$2
-----	-------------------------	-----	-----	-----

### DIVISION IV EDUCATIONAL BOOTHS

Educational booths will be divided into three categories:

- 4H
- Youth/School Organizations
- Adult Civic Organizations and Agencies



Basis for Exhibit Evaluation

- I. Communications to Viewers.....30 Points  
*Does it expland the visibility of the organizations purpose?*  
*Does it arouse and hold interest?*  
*Does it tell a coherent, clear cut story with logical sequence of thought?*  
*Are the title and caption effective in conveying the message?*
- II. Education.....26 Points  
*Is there an appeal for behavioral change?*  
*Is information accurate and factual?*  
*Does the exhibit instruct and teach?*
- III. Creativity.....22 Points  
*Idea clearly defined and shows understanding of purpose and direction.*  
*Originality in adapting ideas.*  
*Is the idea enthusiastically portrayed?*  
*Does the exhibitor convey the feeling that he knows what he is trying to say?*
- IV. Design and Mechanics.....22 Points  
*Is there effective use of color?*  
*Is the number of items or materials used appropriate for the exhibit in that they give neither a cluttered nor a bare appearance?*  
*Are design, lettering, posters, figures and equipment in a relative proportion to area and shape of booth?*  
*Is there a professional like touch in the effective use of equipment and materials?*
- Possible Score.....100 Points

Awards for Exhibits

Place	Premium	Ribbon
First	\$200	Blue
Second	\$175	Red
Third	\$150	White
Fourth	\$130	Yellow
Fifth	\$120	Green
Sixth	\$100	Pink
Participation	\$80	Pink

Best in Show: Adult & Youth - Ribbon Awards

EDUCATIONAL BOOTH

If your class, club or orgniazation is interested in participating in the 2019 Cape Fear Fair & Expo by decorating a booth in our agriculture please contact Brenda Hewlett at 910/470-2127

There are three categories with a limited number of booths available: 4H, Youth/School Organizations and Adult Organizations/Agencies. There will be ribbons and monetary awards in each category. The Fair Association recommends that booths be decorated Monday through Wednesday, October-25-27 between noon and 9 pm. Booths must be ready for judging by 9 am Thursday, October 28 or another booth will take it's place. Booths must remain in place Until November 10. Removal will take place from 10 am

until 3 pm on November 11.

Name of School/Organization: \_\_\_\_\_

Contact Person: \_\_\_\_\_

Telephone # \_\_\_\_\_

Theme: \_\_\_\_\_

Category: \_\_\_\_\_

(A copy of this entry form will be placed on your assigned booth, assignment will be on a first come, first served basis).

DIVISION V - SPECIAL CONTESTS

SC -1	Lego Building Contests	1st	2nd	3rd
	Age 5-8 Years	\$5	\$3	\$2
	Age 9-11 Years	\$5	\$3	\$2
	Age 12-18 Years	\$5	\$3	\$2
	Best in Show - \$25.00			
1.	Entries should not be less than 12" or no more than 18" in length/height and width and should be on a sturdy base.			
2.	Open to area youth. Only one entry per person.			
3.	Purpose - to use Lego's to create an object, structure or scene of your choice.			
4.	Entries judged on creativity and attractiveness.			
SC-1A	Recycled Fair	1st	2nd	3rd
	Age 5-8 Years	\$5	\$3	\$2
	Age 9-11 Years	\$5	\$3	\$2
	Age 12-18 Years	\$5	\$3	\$2
	Best in Show - \$25.00			
SC-2	Scarecrow Contest			
SC-3	Haybale Contest			
SC-4	Rabbit Show			
SC-5	Goat Show			
SC-6	Claude McAllister			



## DIVISION VI - LIVESTOCK

One person may not enter more than two (2) animals per individual class. The awarding of prize money will be based on the number of entries in each category as follows:

1 entry per category - 2nd place prize money only 2 or more entries per category - prize money as stated in this book. Ribbons will be awarded for all first, second and third place winners. The judges will use discretion in awarding prizes as to the worthiness of the entries and may reserve the right to withhold a prize if the entry is deemed unworthy. All judges' decisions are final. All birds will be tested for pullorum on Wednesday, October 27 from 3-6 pm. All other Animals are allowed to enter from 3-10 on Thursday October 28. No entry fee is required. Feed is provided. All animals must be removed between 10 am and 3 pm on Monday, November 8th.

### Regulations

1. All out of state cattle must have been tested for Bang's Disease at least 120 days before the fair. North Carolina cattle do not have to be tested for Bang's Disease.
2. Cattle must be free of infectious/contagious diseases including foot, rot, mange, pink eye, ringworm, warts and cow pox.
3. Breeding swine may be exhibited.
4. Swine must be free of infectious/contagious diseases including atrophic rhinitis and mange **and all swine must have a swine ID ear tag issued by NCDA/CS**
5. Sheep/goats must be free of infectious/contagious diseases including foot rot, pink eye and ringworm. **All sheep and goats must have a Scrapie Eartag.**
6. Horses must be free of any infectious/contagious diseases. All horses must have a negative coggins test within the last 12 months. All horses should have a current rabies, tetanus and sleeping sickness vaccinations.
7. Poultry must be free of infectious/contagious diseases including infectious bronchitis, coryza, pullorum, fowl pox, external parasites and laryngotracheitis.
8. Rabbits must be free of infectious/contagious disease including snuffles, coccidiosis, and external parasites.
9. All required tests must be in the name of the animal's owner or family of exhibitor.
10. All poultry will be inspected by a certified inspector from the state of North Carolina. Any sign of infectious/contagious disease will result in the animal's removal from the livestock exhibit.
11. Any sign of infectious/contagious disease will result in the animal's removal from the livestock exhibit.
12. All out of state animals must be accompanied by a health certificate dated within 60 days of the fair starting date.

### Livestock General Rules and Regulations

Entries are open to anyone residing in New Hanover, Pender or Brunswick Counties or are a member of a 4H club in one of these counties.

1. Entries close October 17th.
2. Entry form is on the website.  
Any questions text Cindy McNally, 910/540-3700. Judges' sheets will be prepared from entries. Please be accurate.
3. Owners must provide a water and feed schedule for each animal entered. Any special diets or special feeding requirements will be discussed with the Livestock Superintendent.  
Bedding, feed and water will be provided by the CFF&E. We reserve the right to choose the brand of feed to be used. Any participant needing a special diet for their animal must provide the feed. Livestock staff must be present when animal is fed. Substitutions will be permitted, but no later than Monday, October 28th at 12 pm with the Livestock Superintendent.

6. The decisions of the judges shall be final in all cases except mistakes, fraud, misrepresentation or collusion not discovered at the time of the award.
7. All categories will be divided into youth (not passed 19th birthday as of January 1, 2019 and Open (19 and over).

### Departments

- A. Beef Cattle
- B. Dairy Cattle
- C. Swine
- D. Horses
- E. Fowl
- F. Sheep
- G. Rabbits
- H. Goats

### A. Beef Cattle

All Other Breeds		1st	2nd
A-1	Best Steer over 4 years old	\$15	\$13
A-2	Best Steer over 2 years/under 4 years	\$15	\$13
A-3	Junior Steer over 1 year/under 4 years	\$15	\$13
A-4	Junior Steer over 1 and under 2	\$15	\$13
A-5	Best Bull or Steer Calf under 6 months	\$15	\$13
A-6	Best Cow over 4 years	\$15	\$13
A-7	Best Cow, over 2 and under 4 years	\$15	\$13
A-8	Best Cow, over 1 and under 2 years	\$15	\$13
A-9	Best Heifer, 6 months to a year	\$15	\$13
A-10	Best Heifer, under 6 months	\$15	\$13

### Angus

A-11	Best Steer, over 4 years old	\$15	\$13
A-12	Best Steer over 2 years and under 4 years	\$15	\$13
A-13	Junior Steer over 1 and under 2	\$15	\$13
A-14	Junior Bull or Steer Calf 6 months to 1 year	\$15	\$13
A-15	Best Bull or Steer calf under 6 months	\$15	\$13
A-16	Best Cow, over 4 years	\$15	\$13
A-17	Best Cow, over 2 and under 4 years	\$15	\$13
A-18	Best Cow, over 1 and under 2 years	\$15	\$13
A-19	Best Heifer, 6 months to a year	\$15	\$13
A-20	Best Heifer, under 6 months	\$15	\$13

### Belted Galloway

A-21	Best Steer, over 4 years old	\$15	\$13
A-22	Best Steer over 2 years and under 4 years	\$15	\$13
A-23	Junior Steer over 1 and under 2 years	\$15	\$13
A-24	Junior Steer Calf 6 months to 1 year	\$15	\$13
A-25	Junior Bull or Steer Calf under 6 months	\$15	\$13
A-26	Best Cow, over 4 years	\$15	\$13
A-27	Best Cow, over 2 and under 4 years	\$15	\$13
A-28	Best Cow, over 1 and under 2 years	\$15	\$13
A-29	Best Heifer, 6 months to a year	\$15	\$13
A-30	Best Heifer, under 6 months	\$15	\$13



<b>Charolais</b>		<b>1st</b>	<b>2nd</b>
A-31	Best Steer, over 4 years old	\$15	\$13
A-32	Best Steer over 2 years and under 4 years	\$15	\$13
A-33	Junior Steer over 1 and under 2 years	\$15	\$13
A-34	Junior Steer Calf 6 months to 1 year	\$15	\$13
A-35	Best Bull or Steer Calf under 6 months	\$15	\$13
A-36	Best Cow, over 4 years	\$15	\$13
A-37	Best Cow, over 2 and under 4 years	\$15	\$13
A-38	Best Cow, over 1 and under 2 years	\$15	\$13
A-39	Best Cow 6 months to a year	\$15	\$13
A-40	Best Heifer, under 6 months	\$15	\$13
<b>Gelbvieh</b>			
A-41	Best Steer, over 4 years old	\$15	\$13
A-42	Best Steer over 2 years and under 4 years	\$15	\$13
A-43	Junior Steer over 1 and under 2 years	\$15	\$13
A-44	Junior Steer 6 months to 1 year	\$15	\$13
A-45	Best Bull of Steer Calf under 6 months	\$15	\$13
A-46	Best Cow over 4 years	\$15	\$13
A-47	Best Heifer over 2 years and under 4	\$15	\$13
A-48	Best Cow over 1 and under 2 years	\$15	\$13
A-49	Best Heifer 6 months to a year	\$15	\$13
A-50	Best Heifer under 6 months	\$15	\$13
<b>Hereford</b>			
A-51	Best Steer, over 4 years old	\$15	\$13
A-52	Best Steer over 2 years and under 4 years	\$15	\$13
A-53	Junior Steer over 1 and under 2 years	\$15	\$13
A-54	Junior Steer 6 months to 1 year	\$15	\$13
A-55	Best Bull of Steer Calf under 6 months	\$15	\$13
A-56	Best Heifer over 4 years	\$15	\$13
A-57	Best Heifer over 2 years and under 4	\$15	\$13
A-58	Best Heifer, over 1 and under 2 years	\$15	\$13
A-59	Best Heifer 6 months to a year	\$15	\$13
A-60	Best Heifer under 6 months	\$15	\$13
<b>Limousin</b>			
A-61	Best Steer, over 4 years old	\$15	\$13
A-62	Best Steer over 2 years and under 4 years	\$15	\$13
A-63	Junior Steer over 1 and under 2 years	\$15	\$13
A-64	Junior Steer 6 months to 1 year	\$15	\$13
A-65	Junior Bull or Steer Calf under 6 months	\$15	\$13
A-66	Best Cow over 4 years	\$15	\$13
A-67	Best Cow, over 2 years and under 4	\$15	\$13
A-68	Best Cow, over 1 year and under 2	\$15	\$13
A-69	Best Heifer 6 months to a year	\$15	\$13
A-70	Best Heifer under 6 months	\$15	\$13
<b>Simmental</b>			
A-81	Best Steer, over 4 years old	\$15	\$13
A-82	Best Steer over 2 years and under 4 years	\$15	\$13
A-83	Best Steer over 1 years and under 2 years	\$15	\$13
A-84	Junior Bull or Steer Calf under 6 months	\$15	\$13
A-85	Best Cow over 4 years	\$15	\$13
A-86	Best Cow over 2 years and under 4	\$15	\$13
A-87	Best Cow, over 1 and under 2 years	\$15	\$13
A-88	Best Heifer 6 months to a year	\$15	\$13
A-89	Best Heifer under 6 months	\$15	\$13

<b>B. Dairy Cattle</b>		<b>1st</b>	<b>2nd</b>
<b>Ayshire</b>			
B-01	Best Bull over 4 years	\$15	\$13
B-02	Best Bull over 2 years and under 4	\$15	\$13
B-03	Best Bull over 1 year and under 2	\$15	\$13
B-04	Junior Bull calf 6 months to a year	\$15	\$13
B-05	Junior Bull calf under 6 months	\$15	\$13
B-06	Best Cow over 4 years	\$15	\$13
B-07	Best Cow over 2 and under 4 years	\$15	\$13
B-08	Best Cow over 1 and under 2	\$15	\$13
B-09	Best Heifer 6 months to a year	\$15	\$13
B-10	Best Heifer under 6 months	\$15	\$13
<b>Brown Swiss</b>			
B-11	Best Bull over 4 years	\$15	\$13
B-12	Best Bull over 2 years and under 4	\$15	\$13
B-13	Best Bull over 1 year and under 2	\$15	\$13
B-14	Junior Bull calf 6 months to a year	\$15	\$13
B-15	Junior Bull calf under 6 months	\$15	\$13
B-16	Best Cow over 4 years	\$15	\$13
B-17	Best Cow over 2 and under 4 years	\$15	\$13
B-18	Best Cow over 1 and under 2	\$15	\$13
B-19	Best Heifer 6 months to a year	\$15	\$13
B-20	Best Heifer under 6 months	\$15	\$13
<b>Guernsey</b>			
B-21	Best Bull over 4 years	\$15	\$13
B-22	Best Bull over 2 years and under 4	\$15	\$13
B-23	Best Bull over 1 year and under 2	\$15	\$13
B-24	Junior Bull calf 6 months to a year	\$15	\$13
B-25	Junior Bull calf under 6 months	\$15	\$13
B-26	Best Cow over 4 years	\$15	\$13
B-27	Best Cow over 2 and under 4 years	\$15	\$13
B-28	Best Cow over 1 and under 2	\$15	\$13
B-29	Best Heifer 6 months to a year	\$15	\$13
B-30	Best Heifer under 6 months	\$15	\$13
<b>Holsteins</b>			
B-31	Best Steer over 4 years	\$15	\$13
B-32	Best Steer over 2 and under 4 years	\$15	\$13
B-33	Best Steer over 1 and under 2 years	\$15	\$13
B-34	Junior Steer calf 6 months to a year	\$15	\$13
B-35	Junior Bull or Steer Calf under 6 months	\$15	\$13
B-36	Best Cow over 4 years	\$15	\$13
B-37	Best Cow over 2 and under 4 years	\$15	\$13
B-38	Best Cow over 1 and under 2	\$15	\$13
B-39	Best Heifer 6 months to a year	\$15	\$13
B-40	Best Heifer under 6 months	\$15	\$13
<b>Jersey</b>			
B-41	Best Bull over 4 years	\$15	\$13
B-42	Best Bull over 2 and under 4 years	\$15	\$13
B-43	Best Bull over 1 and under 2 years	\$15	\$13
B-44	Junior bull calf 6 months to a year	\$15	\$13
B-45	Junior Bull Calf under 6 months	\$15	\$13
B-46	Best Cow over 4 years	\$15	\$13
B-47	Best Cow over 2 and under 4 years	\$15	\$13
B-48	Best Cow over 1 and under 2	\$15	\$13
B-49	Best Heifer 6 months to a year	\$15	\$13
B-50	Best Heifer under 6 months	\$15	\$13



<b>C. Swine</b>			
<b>American Guinea Hog</b>			
C-01	Senior Boar, 1 year and over	1st	2nd
		\$15	\$13
C-02	Junior Boar, under 1 year	\$15	\$13
C-03	Senior Sow or Gilt, 1 year and over	\$15	\$13
C-04	Junior Gilt under 1 year	\$15	\$13
<b>American Landrace</b>			
C-05	Senior Boar 1 year and over	\$15	\$13
C-06	Junior Boar, under 1 year	\$15	\$13
C-07	Senior Sow or Gilt, 1 year and over	\$15	\$13
C-08	Junior Gilt under 1 year	\$15	\$13
<b>Berkshire</b>			
C-09	Senior Boar 1 year and over	\$15	\$13
C-10	Junior Boar, under 1 year	\$15	\$13
C-11	Senior Sow or Gilt, 1 year and over	\$15	\$13
C-12	Junior Gilt under 1 year	\$15	\$13
<b>Duroc</b>			
C-13	Senior Boar 1 year and over	\$15	\$13
C-14	Junior Boar, under 1 year	\$15	\$13
C-15	Senior Sow or Gilt, 1 year and over	\$15	\$13
C-16	Junior Gilt under 1 year	\$15	\$13
<b>Hampshire</b>			
C-17	Senior Boar 1 year and over	\$15	\$13
C-18	Junior Boar, under 1 year	\$15	\$13
C-19	Senior Sow or Gilt, 1 year and over	\$15	\$13
C-20	Junior Gilt under 1 year	\$15	\$13
<b>Pot Belly</b>			
C-21	Senior Boar 1 year and over	\$15	\$13
C-22	Junior Boar, under 1 year	\$15	\$13
C-23	Senior Sow or Gilt, 1 year and over	\$15	\$13
C-24	Junior Gilt under 1 year	\$15	\$13
<b>Yorkshire</b>			
C-25	Senior Boar 1 year and over	\$15	\$13
C-26	Junior Boar, under 1 year	\$15	\$13
C-27	Senior Sow or Gilt, 1 year and over	\$15	\$13
C-28	Junior Gilt under 1 year	\$15	\$13
<b>D. Horses</b>			
<b>Appaloosa</b>			
		1st	2nd
D-01	Colts, Fillies, under 2 years	\$15	\$13
D-02	Mares, 2 years and older	\$15	\$13
D-03	Geldings, 2 years and older	\$15	\$13
<b>Arabians or Half Arabian</b>			
D-04	Colts, Fillies, under 2 years	\$15	\$13
D-05	Mares, 2 years and older	\$15	\$13
D-06	Geldings, 2 years and older	\$15	\$13
<b>Draft Breeds (Specify Breed)</b>			
D-07	Colts, Fillies, under 2 years	\$15	\$13
D-08	Mares, 2 years and older	\$15	\$13
D-09	Geldings, 2 years and older	\$15	\$13
<b>Gaited Horses (Specify Breed)</b>			
D-10	Colts, Fillies, under 2 years	\$15	\$13
D-11	Mares, 2 years and older	\$15	\$13
D-12	Geldings, 2 years and older	\$15	\$13
<b>Miniature Horses</b>			
D-13	Colts, Fillies, under 2 years	\$15	\$13
D-14	Mares, 2 years and older	\$15	\$13
D-15	Geldings, 2 years and older	\$15	\$13
<b>Mules and Donkeys</b>			
D-16	All ages	\$15	\$13
<b>Other Breeds of Horses (Specify Breed)</b>			
D-17	Colts, Fillies, under 2 years	\$15	\$13
D-18	Mares, 2 years and older	\$15	\$13
D-19	Geldings, 2 years and older	\$15	\$13

<b>Paints</b>			
		1st	2nd
D-20	Colts, Fillies, under 2 years	\$15	\$13
D-21	Mares, 2 years and older	\$15	\$13
D-22	Geldings, 2 years and older	\$15	\$13
<b>Pony Breeds (Specify Breed)</b>			
D-23	Colts, Fillies, under 2 years	Ribbon	\$15
D-24	Mares, 2 years and older	Ribbon	\$15
D-25	Geldings, 2 years and older	Ribbon	\$15
<b>Quarter Horse</b>			
D-26	Colts, Fillies, under 2 years	\$15	\$13
D-27	Mares, 2 years and older	\$15	\$13
D-28	Geldings, 2 years and older	\$15	\$13
<b>Grand Champion</b>			
Grand Champion Horse			
Grand Champion Pony			
Grand Champion Miniature Horse			
Grand Champion Mule or Donkey			

**E. Fowl**  
All categories divided into youth and open

<b>Section EA Large Chickens</b>			
<b>American</b>			
		1st	2nd
EA-1	Plymouth Rock Hen	\$8	\$7
EA-2	Plymouth Rock Rooster	\$8	\$7
EA-3	Dominique Hen	\$8	\$7
EA-4	Dominique Rooster	\$8	\$7
EA-5	Wyandotte Hen	\$8	\$7
EA-6	Wyandotte Rooster	\$8	\$7
EA-7	Rhode Island Red Hen	\$8	\$7
EA-8	Rhode Island Red Rooster	\$8	\$7
EA-9	New Hampshire Hen	\$8	\$7
EA-10	New Hampshire Rooster	\$8	\$7
EA-11	Buckeye Hen	\$8	\$7
EA-12	Buckeye Rooster	\$8	\$7
EA-13	Jersey Giant Hen	\$8	\$7
EA-14	Jersey Giant Rooster	\$8	\$7
EA-15	Delaware Hen	\$8	\$7
EA-16	Delaware Rooster	\$8	\$7
<b>Asiatic Class</b>			
EA-17	Brahma Hen	\$8	\$7
EA-18	Brahma Rooster	\$8	\$7
EA-19	Cochin Hen	\$8	\$7
EA-20	Cochin Rooster	\$8	\$7
EA-21	Langshan Hen	\$8	\$7
EA-22	Langshan Rooster	\$8	\$7
<b>English</b>			
EA-23	Dorking Hen	\$8	\$7
EA-24	Dorking Rooster	\$8	\$7
EA-25	Cornish Hen	\$8	\$7
EA-26	Cornish Rooster	\$8	\$7
EA-27	Orpington Hen	\$8	\$7
EA-28	Orpington Rooster	\$8	\$7
EA-29	Sussex Hen	\$8	\$7
EA-30	Sussex Rooster	\$8	\$7
EA-31	Black Australorp Hen	\$8	\$7
EA-32	Black Australorp Rooster	\$8	\$7

<b>Mediterranean</b>	<b>1st</b>	<b>2nd</b>	EA-89 Meat Production Hen	\$8	\$7
EA-33 Leghorn Hen	\$8	\$7	EA-90 Meat Production Rooster	\$8	\$7
EA-34 Leghorn Rooster	\$8	\$7	EA-91 Ayam Cemani Hen	\$8	\$7
EA-35 Minoraca Hen	\$8	\$7	EA-92 Ayam Cemani Rooster	\$8	\$7
EA-36 Minorca Rooster	\$8	\$7	EA-93 Hen and Chicks	\$8	\$7
EA-37 Spanish Hen	\$8	\$7	<b>Best In Show Large Fowl - RIBBON</b>		
EA-38 Spanish Rooster	\$8	\$7	EA-94 Jersey Giants Hen	\$8	\$7
EA-39 Adalusian Hen	\$8	\$7	EA-95 Jersey Giants Rooster	\$8	\$7
EA-40 Adalusian Rooster	\$8	\$7	EA-96 Langshans Hen	\$8	\$7
EA-41 Ancora Hen	\$8	\$7	EA-97 Langshans Rooster	\$8	\$7
EA-42 Ancora Rooster	\$8	\$7	EA-98 Mottled Javas Hen	\$8	\$7
<b>Continental</b>	\$8	\$7	EA-99 Mottled Javas Rooster	\$8	\$7
EA-43 Hamburg Hen			EA-100 Patridge Cochins Hen	\$8	\$7
EA-44 Hamburg Rooster	\$8	\$7	EA-101 Patridge Cochins Rooster	\$8	\$7
EA-45 Campine Hen	\$8	\$7	EA-102 Rhode Island Reds Hen	\$8	\$7
EA-46 Campine Rooster	\$8	\$7	EA-103 Rhode Island Reds Rooster	\$8	\$7
EA-47 Lakenvelder Hen	\$8	\$7	EA-104 Silver Laced Wyandottes Hen	\$8	\$7
EA-48 Lakenvelder Rooster	\$8	\$7	EA-105 Silver Laced Wyandottes Rooster	\$8	\$7
EA-49 Polish Hen	\$8	\$7	EA-106 White Cochins Hen	\$8	\$7
EA-50 Polish Rooster	\$8	\$7	EA-107 White Cochins Rooster	\$8	\$7
EA-51 Barnvelder Hen	\$8	\$7	EA-108 White Plymouth Rocks Hen	\$8	\$7
EA-52 Barnvelder Rooster	\$8	\$7	<b>Mediterranean</b>		
EA-53 Houdan Hen	\$8	\$7	EA-109 White Plymouth Rocks Rooster	\$8	\$7
EA-54 Houdan Rooster	\$8	\$7	EA-110 Anconas Hen	\$8	\$7
EA-55 Favorelle Hen	\$8	\$7	EA-111 Anconas Rooster	\$8	\$7
EA-56 Favorelle Rooster	\$8	\$7	EA-112 Black Minorcas Hen	\$8	\$7
EA-57 Welsummer Hen	\$8	\$7	EA-113 Black Minorcas Rooster	\$8	\$7
EA-58 Welsummer Rooster	\$8	\$7	EA-114 Blue Andalusians Hen	\$8	\$7
EA-59 Maran Hen	\$8	\$7	EA-115 Blue Andalusians Rooster	\$8	\$7
EA-60 Maran Rooster	\$8	\$7	EA-116 Leghorns Hen	\$8	\$7
<b>Games</b>			EA-117 Leghorns Rooster	\$8	\$7
EA-61 Modern Game Hen	\$8	\$7	EA-118 White Faced Black Spanish Hen	\$8	\$7
EA-62 Modern Game Rooster	\$8	\$7	EA-119 White Faced Black Spanish Rooster	\$8	\$7
EA-63 Old English Game Hen	\$8	\$7	EA-120 White Minorcas Hen	\$8	\$7
EA-64 Old English Game Rooster	\$8	\$7	EA-121 White Minorcas Rooster	\$8	\$7
EA-65 Pitt Game Hen	\$8	\$7	EA-122 Ayam Cemani Hen	\$8	\$7
EA-66 Pitt Game Rooster	\$8	\$7	<b>Section EB Bantams</b>	\$8	\$7
<b>Oriental</b>			<b>Game Bantams</b>		
EA-67 Sumatra Hen	\$8	\$7	EB1 Modern Game Hen	\$8	\$7
EA-68 Sumatra Rooster	\$8	\$7	EB2 Modern Game Rooster	\$8	\$7
EA-69 Malay Hen	\$8	\$7	EB-3 Old English Hen	\$8	\$7
EA-70 Malay Rooster	\$8	\$7	EB-4 Old English Rooster	\$8	\$7
EA-71 Phoenix Hen	\$8	\$7	EB-5 American Game Hen	\$8	\$7
EA-72 Phoenix Rooster	\$8	\$7	EB-6 American Game Rooster	\$8	\$7
EA-73 Yokohoma Hen	\$8	\$7	<b>Single Comb Clean Legged Other Than Game Bantams</b>		
EA-74 Yokohoma Rooster	\$8	\$7	EB-7 Ancona Hen	\$8	\$7
EA-75 Aseel Hen	\$8	\$7	EB-8 Ancona Rooster	\$8	\$7
EA-76 Aseel Rooster	\$8	\$7	EB-9 Andalusian Hen	\$8	\$7
EA-77 Shamo Hen	\$8	\$7	EB-10 Andalusian Rooster	\$8	\$7
EA-78 Shamo Rooster	\$8	\$7	EB-11 Australorp Hen	\$8	\$7
<b>All Other Breeds Class</b>			EB-12 Australorp Rooster	\$8	\$7
<b>Miscellaneous</b>			EB-13 Campine Hen	\$8	\$7
EA-79 Sultan Hen	\$8	\$7	EB-14 Campine Rooster	\$8	\$7
EA-80 Sultan Rooster	\$8	\$7	EB-15 Delaware Hen	\$8	\$7
EA-81 Naked Neck Hen	\$8	\$7	EB-16 Delaware Rooster	\$8	\$7
EA-82 Araucana Hen	\$8	\$7	EB-17 Dorking Hen	\$8	\$7
EA-83 Aracuna Rooster	\$8	\$7	EB-18 Dorking Rooster	\$8	\$7
EA-84 Ameraucana Hen	\$8	\$7	EB-19 Dutch Hen	\$8	\$7
<b>Non APA Recognized Breeds</b>			EB-20 Dutch Rooster	\$8	\$7
EA-85 Sex Link Hen	\$8	\$7	EB-21 Japanese Hen	\$8	\$7
EA-86 Sex Link Rooster	\$8	\$7	EB-22 Japanese Rooster	\$8	\$7
EA-87 Egg Production Hen	\$8	\$7	EB-23 Java Hen	\$8	\$7
EA-88 Egg Production Rooster	\$8	\$7	EB-24 Dorkings Hen	\$8	\$7
			EB-25 Dorkings Rooster	\$8	\$7

	1st	2nd
EB-26 Jersey Gian Rooster	\$8	\$7
EB-27 Lakenvelder Hen	\$8	\$7
EB-28 Lakenvelder Rooster	\$8	\$7
EB-29 Leghorn Hen	\$8	\$7
EB-30 Leghorn Rooster	\$8	\$7
EB-31 Minorca Hen	\$8	\$7
EB-32 Minorca Rooster	\$8	\$7
EB-33 Naked Neck Hen	\$8	\$7
EB-34 Naked Neck Rooster	\$8	\$7
EB-35 Nankin Hen	\$8	\$7
EB-36 Nankin Rooster	\$8	\$7
EB-37 New Hampshire Hen	\$8	\$7
EB-38 New Hampshire Rooster	\$8	\$7
EB-39 Orpington Hen	\$8	\$7
EB-40 Oprington Rooster	\$8	\$7
EB-41 Phoenix Hen	\$8	\$7
EB-42 Phoenix Rooster	\$8	\$7
EB-43 Plymouth Rock Hen	\$8	\$7
EB-44 Plymouth Rock Rooster	\$8	\$7
EB-45 Rhode Island Hen	\$8	\$7
EB-46 Rhode Island Rooster	\$8	\$7
EB-47 Serama Hen	\$8	\$7
EB-48 Serama Rooster	\$8	\$7
EB-49 Spanish Hen	\$8	\$7
EB-50 Spanish Rooster	\$8	\$7
EB-51 Sussex Hen	\$8	\$7
EB-52 Sussex Rooster		
<b>Rose Comb Clean Legged Bantam</b>		
EB-53 Ancona Hen	\$8	\$7
EB-54 Ancona Rooster	\$8	\$7
EB-55 Belgian Bearded d'anvers Hen	\$8	\$7
EB-56 Belgian Bearded d'anvers Rooster	\$8	\$7
EB-57 Dorking Hen	\$8	\$7
EB-58 Dorking Rooster	\$8	\$7
EB-59 Dominique Hen	\$8	\$7
EB-60 Dominique Rooster	\$8	\$7
EB-61 Hamburg Hen	\$8	\$7
EB-62 Hamburg Rooster	\$8	\$7
EB-63 Leghorn Hen	\$8	\$7
EB-64 Leghorn Rooster	\$8	\$7
EB-65 Nankin Hen	\$8	\$7
EB-66 Nankin Rooster	\$8	\$7
EB-67 Rhode Island Hen	\$8	\$7
EB-68 Rhode Island Rooster	\$8	\$7
EB-69 Rose Comb Hen	\$8	\$7
EB-70 Rose Comb Rooster	\$8	\$7
EB-71 Sebright Hen	\$8	\$7
EB-72 Sebright Rooster	\$8	\$7
EB-73 Wyandotte Hen	\$8	\$7
EB-74 Wyandotte Rooster	\$8	\$7
<b>All Other Combs, Clean Legged Bantam Class</b>		
EB-75 Ameraucana Hen	\$8	\$7
EB-76 Ameraucana Rooster	\$8	\$7
EB-77 Araucana Hen	\$8	\$7
EB-78 Araucana Rooster	\$8	\$7
EB-79 Buckeye Hen	\$8	\$7
EB-80 Buckeye Rooster	\$8	\$7
EB-81 Chantecler Hen	\$8	\$7
EB-82 Chantecler Rooster	\$8	\$7
EB-83 Cornish Hen	\$8	\$7
EB-84 Cornish Rooster	\$8	\$7
EB-85 Cubalaya Hen	\$8	\$7
EB-86 Cubalaya Rooster	\$8	\$7
EB-87 Polish Bantam Hen	\$8	\$7
EB-88 Polish Bantam Rooster	\$8	\$7
EB-89 Buttercup Bantam Hen	\$8	\$7
EB-90 Buttercup Bantam Rooster	\$8	\$7

<b>Feather Legged Bantam Class</b>		
EB-91 Booted Hen	\$8	\$7
EB-92 Booted Rooster	\$8	\$7
EB-93 Braham Bantam Hen	\$8	\$7
EB-94 Braham Bantam Rooster	\$8	\$7
EB-95 Belgian Bearded d'ucclle Hen	\$8	\$7
EB-96 Belgian Bearded d'ucclle Rooster	\$8	\$7
EB-97 Bantam Cochin Hen	\$8	\$7
EB-98 Bantam Cochin Rooster	\$8	\$7
EB-99 Silkie Hen	\$8	\$7
EB-100 Silkie Rooster	\$8	\$7
EB-101 Bantam Sultan Hen	\$8	\$7
EB-102 Bantam Sultan Rooster	\$8	\$7

<b>Ducks</b>		
EC-01 Shamos Rooster	\$8	\$7
EC-02 Blue Wing Teal Drake	\$8	\$7
EC-03 Blue Wing Teal Hen	\$8	\$7
EC-04 Call Drake	\$8	\$7
EC-05 Call Hen	\$8	\$7
EC-06 Cayuga Drake	\$8	\$7
EC-07 Cayuga Hen	\$8	\$7
EC-08 Indian Runner Drake	\$8	\$7
EC-09 Indian Runner Hen	\$8	\$7
EC-10 Khaki Campbell Drake	\$8	\$7
EC-11 Khaki Campbell Hen	\$8	\$7
EC-12 Magpie Drake	\$8	\$7
EC-13 Magpie Hen	\$8	\$7
EC-14 Mallard Drake	\$8	\$7
EC-15 Mallard Hen	\$8	\$7
EC-16 Mandarin Drake	\$8	\$7
EC-17 Mandarin Hen	\$8	\$7
EC-18 Muscovy Drake	\$8	\$7
EC-19 Muscovy Hen	\$8	\$7
EC-20 Pekin Drake	\$8	\$7
EC-21 Pekin Hen	\$8	\$7
EC-22 Ringed Teal Drake	\$8	\$7
EC-23 Ringed Teal Hen	\$8	\$7
EC-24 Rouen Drake	\$8	\$7
EC-25 Rouen Hen	\$8	\$7
EC-26 Saxony Drake	\$8	\$7
EC-27 Saxony Hen	\$8	\$7
EC-28 Silver Appleyard Drake	\$8	\$7
EC-29 Silver Appleyard Hen	\$8	\$7
EC-30 Silver Bahama Pintail Drake	\$8	\$7
EC-31 Silver Bahama Pintail Hen	\$8	\$7
EC-32 Welsh Harlequin Drake	\$8	\$7
EC-33 Welsh Harlequin Hen	\$8	\$7
EC-34 Wood Duck Drake	\$8	\$7
Wood Duck Hen	\$8	\$7



<b>Geese</b>	<b>1st</b>	<b>2nd</b>	<b>Pigeons</b>	<b>1st</b>	<b>2nd</b>
ED-01 African Gander	\$8	\$7	EJ-01 Fantail	\$8	\$7
ED-02 African Goose	\$8	\$7	EJ-02 Homer (racing)	\$8	\$7
ED-03 Chinese Gander	\$8	\$7	EJ-03 King	\$8	\$7
ED-04 Chinese Goose	\$8	\$7	EJ-04 Other	\$8	\$7
ED-05 Embden Gander	\$8	\$7	EJ-05 Roller	\$8	\$7
ED-06 Embden Goose	\$8	\$7	<b>F. Sheep</b>		
ED-07 Pilgrim Drake	\$8	\$7	F-01 Best Woold Sheep Whether	\$15	\$13
ED-08 Pilgrim Hen	\$8	\$7	F-02 Best Woold Sheep Ewe	\$15	\$13
ED-09 Sebastopal Drake	\$8	\$7	F-03 Best Hair Sheep Wether	\$15	\$13
ED-10 Sebastopal Hen	\$8	\$7	F-04 Best Hair Sheep Ewe	\$15	\$13
ED-11 Toulouse Gander	\$8	\$7	<b>G. Rabbits</b>		
ED-12 Toulouse Goose	\$8	\$7	G-01 American Chinchilla Buck	\$8	\$7
<b>Turkey</b>			G-02 American Chinchilla Doe	\$8	\$7
EE-01 BB Bronze Hen	\$8	\$7	G-03 Angora Buck	\$8	\$7
EE-02 BB Bronze Tom	\$8	\$7	G-04 Angora Doe	\$8	\$7
EE-03 BB White Hen	\$8	\$7	G-05 Any other Buck	\$8	\$7
EE-04 BB White Tom	\$8	\$7	G-06 Any other Doe	\$8	\$7
EE-05 Black Spanish Hen	\$8	\$7	G-07 California Buck	\$8	\$7
EE-06 Black Spanish Tom	\$8	\$7	G-08 California Doe	\$8	\$7
EE-07 Blue Slate Hen	\$8	\$7	G-09 Doe and Young Swarf	\$8	\$7
EE-08 Blue Slate Tom	\$8	\$7	G-10 Doe and Young Standard	\$8	\$7
EE-09 Boubon Red Hen	\$8	\$7	G-11 Domestic (misc) Buck	\$8	\$7
EE-10 Boubon Red Tom	\$8	\$7	G-12 Domestic (misc) Doe	\$8	\$7
EE-11 Buff Hen	\$8	\$7	G-13 Domestic Youth Only Buck	\$8	\$7
EE-12 Buff Tom	\$8	\$7	G-14 Doe and Young Dwarf	\$8	\$7
EE-13 Chocolate Hen	\$8	\$7	G-15 Dutch Buck	\$8	\$7
EE-14 Chocolate Tom	\$8	\$7	G-16 Dutch Doe	\$8	\$7
EE-15 Narragansett Hen	\$8	\$7	G-17 English Lop Buck	\$8	\$7
EE-16 Narragansett Tom	\$8	\$7	G-18 English Lop Doe	\$8	\$7
EE-17 Royal Palm Hen	\$8	\$7	G-19 English Spot Buck	\$8	\$7
EE-18 Royal Palm Tom	\$8	\$7	G-20 English Spot Doe	\$8	\$7
EE-19 Standard Bronze Hen	\$8	\$7	G-21 Flemish Giant Buck	\$8	\$7
EE-20 Standard Bronze Tom	\$8	\$7	G-22 Flemish Giant Doe	\$8	\$7
EE-21 Wild Eastern Hen	\$8	\$7	G-23 French Lop Buck	\$8	\$7
EE-22 Wild Eastern Tom	\$8	\$7	G-24 French Lop Doe	\$8	\$7
<b>Peafowl</b>	\$8	\$7	G-25 Harlequin Buck	\$8	\$7
EF-01 India Blue Peacock	\$8	\$7	G-26 Harlequin Doe	\$8	\$7
EF-02 India Blue Peahen	\$8	\$7	G-27 Himalayan Buck	\$8	\$7
EF-03 White Peacock	\$8	\$7	G-28 Himalayan Doe	\$8	\$7
EF-04 White Peahem	\$8	\$7	G-29 Holland Lop Buck	\$8	\$7
<b>Guineas</b>			G-30 Holland Lop Doe	\$8	\$7
EG-01 Any other cock	\$8	\$7	G-31 Hotot Buck	\$8	\$7
EG-02 Any other hen	\$8	\$7	G-32 Hotot Doe	\$8	\$7
EG-03 Pearl Cock	\$8	\$7	G-33 Jersey Woolie Buck	\$8	\$7
EG-04 Pearl Hen	\$8	\$7	G-34 Jersey Woolie Doe	\$8	\$7
EG-05 White Cock	\$8	\$7	G-35 Lionhead Buck	\$8	\$7
EG-06 White Hen	\$8	\$7	G-36 Lionhead Doe	\$8	\$7
<b>Quail</b>	\$8	\$7	G-37 Mini Lop Buck	\$8	\$7
EH-01 Any other Quail	\$8	\$7	G-38 Mini Lop Doe	\$8	\$7
EH-02 Any other Quail Hen	\$8	\$7	G-39 Mini Rex Buck	\$8	\$7
EH-03 Bob White Cock	\$8	\$7	G-40 Mini Rex Doe	\$8	\$7
EH-04 Bob White Hen	\$8	\$7	G-41 Netherland Dwarf Buck	\$8	\$7
EH-05 Button Quail Cock	\$8	\$7	G-42 Netherland Dwarf Doe	\$8	\$7
EH-06 Button Quail Hen	\$8	\$7	G-43 New Zealand Buck	\$8	\$7
EH-07 Cotumis Cock	\$8	\$7	G-44 New Zealand Doe	\$8	\$7
EH-08 Cotumis Hen	\$8	\$7	G-45 Silver Fox Buck	\$8	\$7
<b>Pheasants</b>	\$8	\$7	G-46 Siliver Fox Doe	\$8	\$7
EI-01 Any other Hen	\$8	\$7	G-47 Trianta Buck	\$8	\$7
EI-02 Any other Tom	\$8	\$7	G-48 Trianta Doe	\$8	\$7
EI-03 Ringed Neck Hen	\$8	\$7			
EI-04 Ringed Heck Tom	\$8	\$7			



<b>H.</b>	<b>Goats</b>	<b>1st</b>	<b>2nd</b>
H-01	Angora Doe	\$15	\$13
H-02	Angora Wether	\$15	\$13
H-03	Boer Doe	\$15	\$13
H-04	Boer Wether	\$15	\$13
H-05	Fainting Goat Wether	\$15	\$13
H-06	Fainting Goat Doe	\$15	\$13
H-07	Nigerian Dwarf Doe	\$15	\$13
H-08	Nigerian Dwarf Wether	\$15	\$13
H-09	Nubian Doe	\$15	\$13
H-10	Nubian Wether	\$15	\$13
H-11	Pygmy Doe	\$15	\$13
H-12	Pygmy Wether	\$15	\$13

# Information and General Rules for Exhibitors and Patrons

***Exhibitors and patrons are sincerely requested to make constructive criticisms and offer helpful suggestions toward bettering any part or department of this, YOUR TRI-COUNTY FAIR.***

Please report any discourtesies by gatemen, concessionaires, showmen or others connected with the fair.

Concessions and attractions are granted on the grounds to supply the necessary wants, comforts, conveniences and pleasures of the patrons. The management will not accept or knowingly allow the continuance of any concession, show or other attraction of a questionable nature or a demoralizing tendency, nor will any concession be permitted where the business is conducted in other than a legitimate and legal manner.

Drunkenness, quarreling, or the use of profane or obscene language will not be allowed on the grounds. No begging will be permitted.

No peddling, hawking or selling of any kind will be allowed in the buildings or on the grounds except by special license obtained from the Manager.

All dining areas, lunch stands, refreshment booths and other places dispensing food and beverage must be substantial in structure and neat in appearance. They must meet all health regulations and must sell only good, wholesome food and pure honest goods at reasonable prices which must be approved by the Fair Management and displayed in a prominent place. No soft drinks may be sold in glass bottles.

The management of the Fair reserves the right to amend, add to and interpret the foregoing and following Rules and Regulations, and to arbitrarily settle and determine all questions and differences in regard thereto, or otherwise arising out of headnotes of the various divisions and departments of the Fair, the latter taking precedence.

Disregard of any rule, misrepresentation on the part of the exhibitor, concessionaire or patrons will forfeit all premiums won, privileges granted, fees paid, and rights to further participation in the fair.

The fair will employ, police, guards and traffic directors and will use diligence to promote safety and protection of patrons, and their exhibits and property on the Fairgrounds. But, under no circumstances will the Fair or any of its officers and employees be responsible for loss or damage to persons and their property (including entries, exhibits, automobiles in parking lots, and articles left in cars) because of accidents, theft, fire, the elements or other conditions.

Sufficient electric light and power service will be furnished by the Fair to properly illuminate and service the exhibition buildings and grounds. Exhibitors and concessionaires requiring individual electric light and power service in their booths and stands will need to make application through the Administration Office. **ONLY THE OFFICIAL FAIR ELECTRICIANS MAY MAKE INSTALLATIONS AND CONNECTIONS. ELECTRICAL CHARGES WILL BE ESTIMATED.**

Promiscuous advertising is strictly prohibited. Exhibitors may advertise and distribute literature and free samples from their Place of exhibit only, but may not sell any article or animal from their exhibit space without a permit from the manager. The distribution of advertising matter which conflicts in any manner with a concession sold by the management is prohibited.

No exhibit space assigned may be shared or sublet without permission of the Fair manager.

The fair management reserves the right to reject any exhibit which does not reflect merit and which would not be a credit to the exhibits which are deemed objectionable or unsuitable for exhibition. All entries are accepted conditionally, pending inspection of the article or animal to be exhibited. Any article or animal which proves to be misrepresented or falsely classed will be rejected and the right of the exhibitor to further participation in the Fair will be denied.